



# Point Spring & Driveshaft Co.

Since 1926

**PARTS • SERVICE • EXPERIENCE • SOLUTIONS**



## OE REPLACEMENT LED LIGHTING



**564.46002RM**  
Headlamp RH Black LED  
Freightliner Cascadia P4



**564.46077L**  
Fog Lamp LH Black LED  
Freightliner Cascadia P4



**564.62023**  
Headlamp Assembly RH  
Mack Vision, CX, CXU-GU



**564.55223**  
Combination LED S/T/T, Back-Up  
Light RH IHC ProStar



**564.55215**  
Cab Marker Light LED IHC  
DuraStar, ProStar, TranStar,  
WorkStar, LT, HX



**564.46001LM**  
Headlamp LH Black LED  
Freightliner Cascadia P4



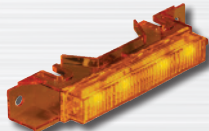
**564.46077R**  
Fog Lamp RH Black LED  
Freightliner Cascadia P4



**564.62022**  
Headlamp Assembly LH  
Mack Vision, CX, CXU-GU



**564.55222**  
Combination LED S/T/T, Back-Up,  
License Light LH IHC ProStar



**564.96022K**  
Sunvisor Marker Light w/Harness  
Amber/Amber Volvo VN



**564.96023K**  
Sunvisor Marker Light w/Harness  
Clear/Amber Volvo VN



**564.96019**  
Turn Signal Lamp LH/RH  
Volvo '04-Up, VN, VNL, VNM



**571.LD329A3**  
Cab Marker Lamp LED  
Kenworth T680, T880



**564.59064**  
Marker Lamp LED Amber  
Kenworth T880



**564.75083**  
Visor Lamp LED Amber Peterbilt 579,  
Kenworth T680, T770, T880



**564.75074**  
Side Marker Amber LED  
LH/RH Peterbilt 579



**564.46094**  
Marker Light Amber  
Freightliner Cascadia P4



**564.54094**  
Cab Roof Marker Lamp  
Amber LED Hino

**Order through your nearest Point Print location or Point Spring Sales Representative!**

[www.pointspring.com](http://www.pointspring.com)

Promotional pricing valid 4/1/2026 - 6/30/2026

# KIT MASTERS

## 8055NKIT

Freightliner  
2008-2019  
M2 & M2-112V  
Cummins ISB

### KYSOR-STYLE FAN CLUTCHES

# NEW



Over 5,000 inch-pounds of Torque!



REPLACES  
HORTON® 991455,  
981455, 99A9649



Kit Includes 3282  
Solenoid Valve

### OURS LOOKS DIFFERENT BECAUSE IT IS DIFFERENT.

#### Direct replacement/upgrade for Horton® 991455 Fan Clutches

The superior design of the 8055NKIT makes for easier and more affordable long-term maintenance. Converting your fan clutch upgrades it from a medium duty fan clutch to a heavy duty fan clutch. Our model is capable of handling a larger fan and will last longer than the competition.

Included with this kit is our 3-way Solenoid Valve NO-NC 125NPTF, 12VDC, Part #3282.

KIT MASTERS  
**KMU**  
UNIVERSITY  
Learn more at  
[www.kitmastersuniversity.com](http://www.kitmastersuniversity.com)

## KIT MASTERS

FAN CLUTCH EXPERTS

825 1st St. NE, Perham, MN • 800-810-9110  
[www.KitMasters.com](http://www.KitMasters.com)

Find us on  
Facebook

YouTube

Part No.		Price
8055NKIT	Now Stocked at Point Spring & Driveshaft.	<b>\$856.99</b>



## Point Spring & Driveshaft Co.

Since 1926



**Make sure to reach out to your nearest Point Spring & Driveshaft Co. location or sales representative to learn more about this product from Bendix!**

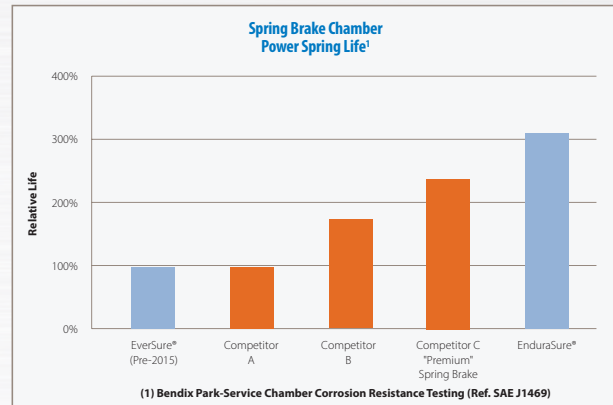
## EnduraSure® Spring Brake

You rely on your spring brakes to stop and park your vehicles with confidence, every time. But when contaminants enter the chamber, corrosion sets in and leads to broken springs – the number one failure mode for spring brakes. Thanks to its innovative design, EnduraSure offers unmatched durability. In fact, in corrosion testing, EnduraSure even outperformed some “premium” spring brakes offered in the marketplace.

Furthermore, recent design improvements to the power spring, service diaphragm and diaphragm retention make an already proven product even more robust to provide longer service life and help lower your total cost of ownership (TCO).

The EnduraSure advantage:

- Up to 3x the power spring life of competitors and even previous Bendix spring brakes
- Bendix® No Touch™ Power Spring increases height between coils by 33% vs. typical T30/30 spring brake, helps prevent coil clash and corrosion
- Epoxy coated power spring enhances corrosion protection
- Lightest weight chamber in its class
- 4-year standard warranty\*



## EnduraSure® Spring Brake Series

### Some of Our Most Popular Part Numbers

Description	Size	Stroke	EnduraSure® Part Number	Pricing	Non-Sealed		
					Haldex Part Number	MGM Part Number	TSE Part Number
EnduraSure® w/o Yoke LS	30/30	3.0"	NT3030ELS-80	<b>73.99</b>	GC3030L	3230051	3030T-OA-LS
EnduraSure® w/o Yoke LS Welded Clevis	30/30	3.0"	NT3030ELS-WC	<b>83.99</b>	GC3030LCW	3230951	
EnduraSure® w/o Yoke Long Rod	30/30	2.5"	NT3030STD-120	<b>81.99</b>	GC3030R	3430551	3030T-OA-HNTRX
EnduraSure® w/o Yoke	30/30	2.5"	NT3030STD-78	<b>61.99</b>	GC3030	3430051	3030T-OA
Piggyback Spring Brake Kit	30/30	2.5"	NT3030STD-KIT	<b>61.99</b>	GP3030K	3430008	3030S-OA-KIT
EnduraSure®-Pro	18/24	2.25"	K132352	<b>178.99</b>	LCP1824D	TRB1824DT051	1816HTND24L-4312





THE DRIVELINE EXPERTS

Now offered by NEAPCO through Point Spring & Driveshaft Co.



THE DRIVELINE EXPERTS



COMMON MID-SHIP COMPONENTS  
(found on the back of this page)



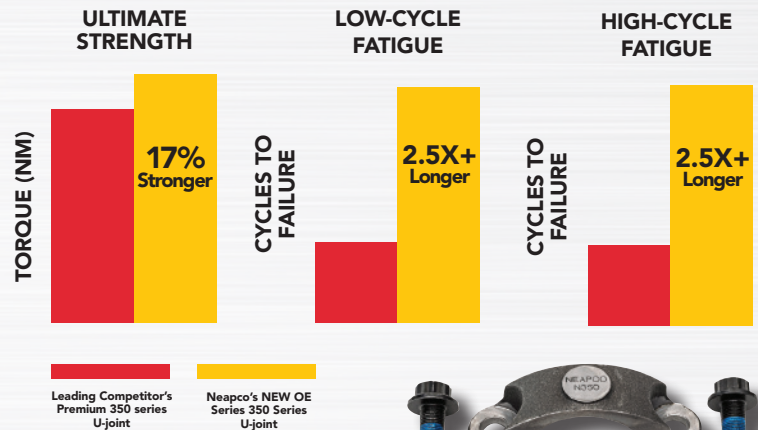
Part# 6-0350  
IN-SHOP, OE-STYLE, PRESS-FIT DESIGN

# N350

## Neapco OE Series

Designed, Engineered and Manufactured to meet or exceed OE Performance Specifications.

- **HOT FORGED CROSS** heat treated to proprietary levels to provide optimal strength and endurance for the intended, specific application.
- **PRECISION GROUND JOURNALS** provide exceptional strength, durability and load distribution to extend life.
- **PREMIUM SEALING SYSTEM** with needle bearing retainer to keep lube in and environmental contaminants out, while holding needle bearings in optimal position for peak performance and extended life of the joint.
- **PRECISION ENGINEERED, EXTENDED LENGTH NEEDLE BEARINGS** that enhance load distribution and durability for extended life.
- **GLASS IMPREGNATED NYLON THRUST WASHER** eliminates metal to metal contact between the bearings and the cap, to minimize heat and maximize life.
- **PRECISION GROUND BEARING CAP OD** for exact OE press-fit into the yoke.
- **OE-STYLE SNAP RING RETENTION SYSTEM** holds the bearing caps in optimal position for peak performance.
- **FLEXIBLE GREASING** improved Y-Zerk grease fitting with dual lubrication points for simultaneous greasing, compared to single headed zerks.



N350-70-18X

<b>Driveline Series:</b>	<b>N350/SPL350*</b>
<b>Used with U-joint(s):</b>	<b>6-0350</b>
<b>Bearing Dia. (in):</b>	<b>2.559</b>
<b>Bolt Hole Diameter (in):</b>	<b>0.571</b>
<b>Bolt Hole Length (in):</b>	<b>1.500</b>
<b>Center Line To Center Line Bolt Holes (in):</b>	<b>3.937</b>
<b>Strap Width (in):</b>	<b>1.350</b>
<b>Thread Size (in) (mm):</b>	<b>M14x1.25</b>
<b>Torque (ft.-lbs.):</b>	<b>188.0</b>

\*SPL - Spicer © Life Series driveshafts is a registered trademark of Dana Limited



Point Spring & Driveshaft Co.

Since 1926

**Dayton**  
**parts**<sup>®</sup>  
DRIVEN BY DORMAN

**Dayton**  
**parts**<sup>®</sup>  
DRIVEN BY DORMAN™



HEAVY-DUTY

# STEERING COMPONENTS

## TURN TO DAYTON TO KEEP YOUR FLEET ROLLING

Stop paying dealer prices or settling for questionable product quality and unpredictable inventory. Dayton has the most complete line of quality steering components for heavy duty trucks in the aftermarket. From king pins to tie rod ends, we're ready to ship from multiple U.S. locations to get you the parts you need to keep productivity up and fleet maintenance costs down.

### COUNT ON DAYTON INNOVATION AND QUALITY

- **King pin sets and repair kits** - including conventional ream-to-fit bi-metal style, plastic composite, and hassle-free spiral bushing design that installs without reaming
- **Remanufactured steering gears**
- **Drag links, cross tube assemblies, and tie rod ends** - designed to match the fit and performance of the original equipment
- **Power steering pumps** - designed to match the fit and function of the original pump on specified applications, and are engineered for reliable performance and durability



**Point Spring & Driveshaft Co.**

Since 1926

**WHEEL END**



# NO TORQUE WRENCH REQUIRED.

STEMCO is changing the game on wheel ends again! With the Auto-Torq axle fastener, **installation has never been easier.** Auto-Torq sets the wheel end in optimum bearing adjustment for maximum life.

**EASY INSTALLATION**

Auto-Torq technology takes the guesswork out of axle fastener installation by eliminating complex processes and specialty tools required with current market axle fasteners.

**MAXIMIZES BEARING LIFE**

By applying the optimum clamp load on the bearings every time, bearing wear is minimized, resulting in the longest bearing service life.

**ALL-IN-ONE SOLUTION**

Let Auto-Torq do the work. Throw away those costly spacers, half-stand bearings and precision hubs necessary for "PreSet" systems. Auto-Torq is compatible with any industry hub manufacturer. Combine with STEMCO industry-leading seals, bearings and hubcaps for extended warranties on your wheel ends.

**SPEEDS WORKFLOW**

By eliminating the need for complex and repetitive steps, Auto-Torq allows for a quicker install time with improved peace of mind that installation is done correctly.

**OPTIMAL WHEEL BEARING ADJUSTMENT**

Designed with an internal mechanism for optimal wheel bearing adjustment according to Society of Automotive Engineers (SAE) Recommended Practice J2535 for Wheel Bearing Adjustment and Optimal Bearing Life.

**PREVENTS BACKOFF WITH EASY REMOVAL**

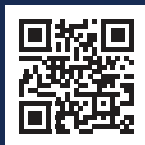
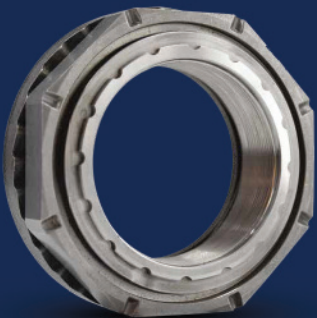
Integrated locking mechanism prevents backoff while still allowing for easy removal for annual inspections and maintenance.

**OFFERS PEACE OF MIND**

With no clips, washers, keepers, snap rings or screws involved, you can rest assured that installation is performed correctly. The Auto-Torq eliminates most variables and sets optimum bearing adjustment AUTOMATICALLY.

Combine Auto-Torq with Any STEMCO Seal for Maximum Impact, or Use It by Itself to Bring the Benefits of Pre-Load into Any Wheel End

APPLICATION	PART NUMBER	PRICING	AUTO-TORQ KIT NUMBER	INCLUDED SEAL PAIRING	PRO-TORQ® CROSS REFERENCE	ZIP-TORQ® CROSS REFERENCE
Trailer N	480-4743	<b>65.99</b>	480-4743-XR	Discover® XR	447-4743	400-4743
			480-4743-GG	Grit Guard®		
			480-4743-GHP	Guardian® HP		
			480-4743-VOY	Voyager®		
Trailer P	480-4723	<b>77.99</b>	480-4723-XR	Discover® XR	447-4723	400-4723
			480-4723-GG	Grit Guard®		
			480-4723-GHP	Guardian® HP		
			480-4723-VOY	Voyager®		
Drive R	480-4973	<b>76.99</b>	480-4973-XR	Discover® XR	449-4973	400-4973
			480-4973-GG	Grit Guard®		
			480-4973-GHP	Guardian® HP		
			480-4973-VOY	Voyager®		





## HEAVY-DUTY CLEANERS & DEGREASERS

Solutions for Trucks, Equipment, Shops & Construction Environments

Year-Round Use = ☀️ Ready-to-Use = ✓

Proudly Distributed By:



### VEHICLE & EQUIPMENT CLEANING

		DISTRIBUTOR PRICING		
		SIZE	P/N	PRICE
<b>VEHICLE WASH</b> <b>E-Z Kleen</b> ☀️ Removes Dirt, Grime, Oil and Diesel Smoke	<b>DILUTION</b> 1:60 LIGHT   1:30 HEAVY	1 GL	K50-01	18.99
		5 GL	K50-05	82.99
		55 GL	K50-55	712.99
<b>HEAVY EQUIPMENT CLEANING</b> <b>Equipment Cleaner</b> ☀️ Biodegradable Cleaner for Heavy Soil and Grease	<b>DILUTION</b> 1:20 LIGHT   1:50 HEAVY	1 GL	K70-01	18.99
		5 GL	K70-05	92.99
		55 GL	K70-55	792.99
<b>UNPOLISHED ALUMINUM &amp; TRAILER BRIGHTENING</b> <b>E-Z Brite</b> ☀️ Removes Oxidation and Restores Aluminum Surfaces	<b>DILUTION</b> 1:75 LIGHT   1:50 - 1:30 HEAVY	1 GL	T90-01	32.99
		5 GL	T90-05	150.99
		55 GL	T90-55	1389.99
<b>POLISHED ALUMINUM CLEANING</b> <b>Mirror X</b> ☀️ Restores Shine to Polished Aluminum Surfaces	<b>DILUTION</b> 1:30 LIGHT   1:20 - 1:10 HEAVY	1 GL	M70-01	40.99
		5 GL	M70-05	194.99
		55 GL	M70-55	1904.99

### DEGREASING SOLUTIONS

		DISTRIBUTOR PRICING		
		SIZE	P/N	PRICE
<b>WATER-BASED DEGREASER</b> <b>All-Purpose Purple</b> Breaks Down Grease, Oil and Shop Grime	<b>DILUTION</b> 2:80 LIGHT   FULL STRENGTH	32 OZ	DG15-32	6.99
		1 GL	DG15-01	12.99
		5 GL	DG15-05	63.99
		55 GL	DG15-55	481.99
<b>HEAVY-DUTY SOLVENT DEGREASER</b> <b>E-Z Off</b> ✓ Removes Tar, Grease and Road Film	READY-TO-USE	1 GL	DG10-01	33.99
		5 GL	DG10-05	163.99
		55 GL	DG10-55	1470.99

### ASPHALT APPLICATIONS

		DISTRIBUTOR PRICING		
		SIZE	P/N	PRICE
<b>TAR &amp; ASPHALT REMOVAL</b> <b>Asphalt Remover</b> ✓ Cuts through Asphalt, Tar and Sealer Buildup	READY-TO-USE	1 GL	K20-01	33.99
		5 GL	K20-05	158.99
		55 GL	K20-55	1501.99
<b>ASPHALT RELEASE AGENT</b> <b>AR-92</b> NTPEP-Evaluated Prevents Asphalt From Sticking To Equipment	<b>DILUTION</b> 1:40	1 GL	K30-01	11.99
		5 GL	K30-05	56.99
		55 GL	K30-55	478.99

### SHOP & CAB CLEANERS

INTERIOR CLEANER		GLASS CLEANER		HAND SOAP		PUMICE SOAP		CLEANING TOWELS		TIRE DRESSING				
SIZE	P/N	PRICE	SIZE	P/N	PRICE	SIZE	P/N	PRICE	SIZE	P/N	PRICE			
32 OZ	V30-32	7.99	32 OZ	V20-32	5.99	13 OZ	C10-13	6.99	25 CT	C20-25	9.99	32 OZ	V10-32	15.99
						85 OZ	C10-85	28.99	70 CT	C20-70	18.99			



SCAN HERE  
E-ZOIL Cleaners

Always Test On An Inconspicuous Area Before Full Application.  
Dilutions May Vary Depending On Soil Level.



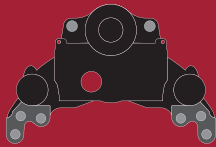
**MERITOR**

NEW PRODUCT ANNOUNCEMENT

AFTERMARKET

# MERITOR<sup>®</sup> MFLEX4<sup>™</sup> AIR DISC BRAKE PADS

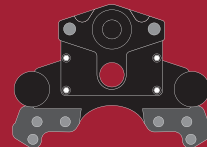
## MFLEX4<sup>™</sup> FITS



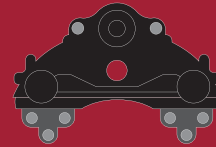
WABCO MAXXUS<sup>™</sup>



Bendix<sup>®</sup> ADB22X<sup>®</sup>



WABCO PAN22<sup>™</sup>



Hendrickson MAXX22T<sup>™</sup>

### MORE FLEX. LESS HASSLE. MFLEX4.

As a legacy innovative leader in aftermarket braking, Meritor combined our OEM and aftermarket expertise to develop an air disc brake pad that fits the four leading calipers to benefit everyone from purchasing to counter sales, technician to the service manager.

- The patent-pending Meritor MFLEX4 pad fits a Bendix<sup>®</sup> ADB22X<sup>®</sup>, Hendrickson MAXX22T<sup>™</sup>, WABCO MAXXUS<sup>™</sup>, and WABCO PAN22<sup>™</sup> caliper
- Covers 70% of the class 8 truck and trailer market
- Linehaul and severe-service friction mix



#### Meritor MFLEX4 Air Disc Brake Pads

Friction Mix	Part Number	Compatible Calipers
Linehaul	MFLEX4*	Bendix <sup>®</sup> ADB22X, Hendrickson MAXX22T <sup>™</sup> , WABCO MAXXUS <sup>™</sup> , and WABCO PAN22 <sup>™</sup>
	MFLEX4RB	
Severe-Service	MFLEX4SS*	
	MFLEX4SSRB	

\*Retainer bars not included.

#### Each Kit Includes:

- 4 pads
- 4 pad springs
- 2 WABCO<sup>®</sup> pressure plate springs
- Bendix<sup>®</sup> cotter pin assembly
- 2 Bendix<sup>®</sup> shear nuts
- Adjuster caps
- Retainer bolts
- Meritor<sup>®</sup> positive pad retraction (PPR) springs
- Retainer bars for part numbers MFLEX4RB and MFLEX4SSRB



#### Meritor MFLEX4 Retainer Bar Kit Part Numbers

Description	Bendix <sup>®</sup> ADB22X	WABCO PAN22 <sup>™</sup>	WABCO MAXXUS <sup>™</sup>	Hendrickson MAX22T <sup>™</sup>
Retainer Bar Kit	HWK 22X01	HWK P2201	HWK MAX01	

Inquire more information from your nearest Point Spring & Driveshaft Co. Sales Representative



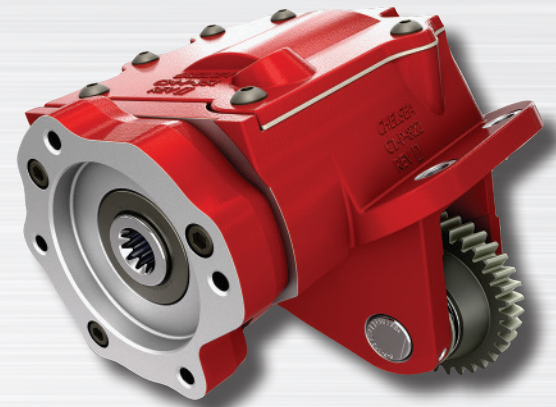
**Point Spring & Driveshaft Co.**

Since 1926

# CHELSEA® Z15 SERIES

## PTO for MY2025+ Ram TorqueFlite® HD Series

The Z15 Series PTO from Parker Chelsea is engineered for the next generation of vocational vehicles. Built for MY2025 Ram Heavy Duty trucks mated to the ZF PowerLine™ 8-speed TorqueFlite® HD automatic transmission, this live-drive, hydraulically shifted unit delivers high performance in a compact package. Featuring pressure-lubricated internals and multiple pump-mount options, the Z15 is ideal for space-constrained vocational upfits while delivering rugged durability and reliable, continuous power for the most demanding applications.



Z15 Series

### Applications:

- Aerial
- Tow and Recovery
- Light Dump Truck
- Snow and Ice
- Service Truck
- Water Drilling

### Product Features and Benefits:

- Compact Footprint.
- LiveDrive Capability.
- Pressure Lubrication.
- Remote Hydraulic Shifting.
- SmartStart Option for High-Torque Start-up.

## Z15 Series Power Take-Off – Ram TorqueFlite® HD

Specifications & Pump Options – For PTO output information see application catalog

Specifications Chart		Approximate Weight: 33 lbs. [15 kg]
		<b>Z15RSMG</b>
Continuous Torque Rating lb-ft [N-m]	111 [150]	
HP Rating for Continuous Service		
At 1000 RPM of Output Shaft HP [kW]	21 [15]	
At 1500 RPM of Output Shaft HP [kW]	32 [24]	

Specifications Chart					
Transmission Mounting Side	Flange Type	Shaft Type	Pump Rotation	Ratio	Continuous Maximum Speed
Z15 - Left Hand	SAE A	(3/4" - 11T) (7/8" - 11T)	CW	150% Engine	2500 RPM

**NOTE:** Higher speed output requirements require individual Application Approval.



REINVENTING THE WHEEL END®



## UNITIZED REV-PINION SEVERE-DUTY SEALS

### REV-PINION UNITIZED SEALS FEATURE:

- Unitized design installs easily with a yoke bolt/nut and install tool.
- Press-fit OD incorporates an integral wear ring for optimal lip contact, eliminating yoke wear and repair sleeves that shorten seal life.
- Sealing lips are insulated from yoke contact for longer life.
- Labyrinth sealing path with multiple dust lips keeps contamination out, extending seal life.

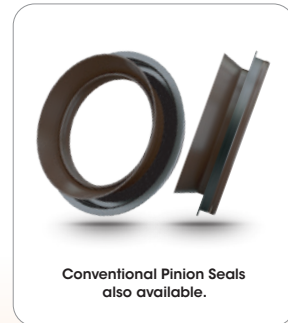


Unitized Pinion Seal

Higher shaft speeds and increased torque demand a seal that can withstand higher temperatures. RevHD® heavy duty pinion seals are designed for these conditions. The unitized design eliminates contact between the yoke surface and the seal lip. New yokes will remain new at the sealing point.



Available for a variety of different applications. Meets or exceeds OE material recommendations.



Conventional Pinion Seals also available.

	POSITION	Bore ID / Yoke Shaft OD	RevHD Part Number	Pricing	O.E. Numbers	National	SKF
Unitized	Forward Unit Input (FUI)	4.249 / 3.250	RP-FI-001	<b>31.81</b>	A1205R2592, A11205X2728	100494	32500
	Forward Unit Output (FUO)	3.751 / 3.000	RP-FO-002	<b>31.81</b>	A1205P2590, A11205Y2729	100495	30008
	Rear Unit Input (RUI)	4.936 / 3.000	RP-RI-003	<b>31.81</b>	A1205N2588, A11205Z2730	100263	30009
	Rear Unit Input (RUI)	5.501 / 3.250	RP-RI-004	<b>31.81</b>	A1205Q2591, A11205A2731	100557	32503
Conventional	Rear Unit Input (RUI)	4.564 / 3.000	RP1-RI-015	<b>31.81</b>	127591	—	29528
	Forward Unit Output (FUO)	3.625 / 2.625	RP1-FO-016	<b>31.81</b>	127720, 63910, 127592	475003N	26200, 26209, 26239



## The industry's only No-Slack® self-adjusting lock!

- Stock up on top performing Genuine Fontaine Fifth Wheels and Parts
- Don't let your customer have a breakdown on the road—Repair today and keep them rolling!
- Protect the OEM factory warranty with Genuine Fontaine parts
- Contact your closest PSD location today!



PART NUMBER  
**SLTPL6000**

- 6000 Series No-Slack® Top Plate
- 50,000 lbs vertical load
- Up to 115,000 lbs GCW



PART NUMBER  
**SLTPL7000**

- 7000 Series No-Slack® **CAST-STEEL** Top Plate
- 55,000 lbs vertical load
- Up to 140,000 lbs GCW



PART NUMBER  
**KIT-RX-67NTL**

- No-Slack® **REBUILD** Kit
- Covers both 6000 and 7000 Series Fifth Wheels



PART NUMBER  
**KIT-RPR-6000L**

- No-Slack® **REPAIR** Kit
- Covers both 6000 and 7000 Series Fifth Wheels



Get the APP!

[www.fifthwheel.com/app](http://www.fifthwheel.com/app)

©2026 Fontaine Fifth Wheel  
February 2026 • LT-363-PSD R4



Part Number	Description	Price
SLTPL6000	50,000 lbs vertical load - <i>While Supplies Last!</i>	<b>941.99</b>
SLTPL7000	55,000 lbs vertical load	<b>1395.99</b>
KIT-RX-67NTL	No Slack Rebuild Kit	<b>451.99</b>
KIT-RPR-6000L	No Slack Repair Kit	<b>267.99</b>



**Point Spring & Driveshaft Co.**

Since 1926

# Marathon

BRAKE SYSTEMS

## KVT Vocational Dependable. Tough. Proven.

Marathon developed KVT brake linings to handle the high heat and heavy-duty demands of refuse, concrete, logging, sand and gravel, oil delivery, beverage transport and other tough applications. KVT is a premium, organic material rated for 25,000 lb axle loads that provides stopping power you can count on with a long service life. This versatile lining meets Federal regulations in accordance with FMVSS 121 test procedure for applications up to 25,000 lbs.

KVT linings feature the Hi-Density Marathon formulation (detailed at right) that will improve your bottom line through better performance and fewer maintenance headaches.

### KVT Delivers

- Ideal for high heat, severe duty applications
- Longest lining life in its class
- Hi-Density formulation for excellent heat dissipation
- Dependable stopping performance
- Excellent brake fade and recovery characteristics
- Extremely drum friendly

## Hi-Density Friction

One of the most significant design characteristics of any heavy duty brake lining is its density. When higher quality and heavier raw materials are used in a lining's formulation, it creates a higher mass in the block or stated another way, higher density. Truck brakes are designed to convert the energy of a moving vehicle into heat energy. A higher density increases the lining's ability to efficiently handle heat, and is the most critical component in a friction material's fade, recovery and wear.

- Higher density friction materials have the ability to hold more heat energy and therefore more efficiently dissipate the heat
- Higher density friction materials have stronger structural integrity, making them less likely to crack in service, while riveting or due to rust jacking
- Higher density linings exhibit significantly better wear characteristics, especially at higher temperatures
- Higher density friction materials are more resistant to brake fade and water fade



**See the difference...  
higher density  
Marathon linings  
tip the scale vs.  
leading competitor**



## KVT

### Vocational

A premium long life friction material designed for severe duty and multiple stop braking

Promotional pricing valid 4/1/2026 - 6/30/2026

## POINT SPRING & DRIVESHAFT CO. LOCATIONS

**NEVILLE ISLAND, PA**  
7309 Grand Avenue  
Neville Island, PA 15225  
Ph: 412-264-6714  
Fx: 412-264-6722  
(800) 837-4713

**NEW CASTLE, PA**  
1001 Harbor Street  
New Castle, PA 16101  
Ph: 724-658-9076  
Fx: 724-658-8746  
(800) 837-8713

**TROY, PA**  
68 Canton Street  
Troy, PA 16947  
Ph: 570-297-5555  
Fx: 570-297-5510  
(855) 297-6380

**SARVER, PA**  
555 North Pike Road  
Sarver, PA 16055  
Ph: 724-352-3340  
Fx: 724-352-5311

**INDIANA, PA**  
1849 South Sixth  
Street Suite 5  
Indiana, PA 15701  
Ph: 724-463-3710

**GREENSBURG, PA**  
1967 Route 66  
Greensburg, PA 15601  
Ph: 724-834-0750  
Fx: 724-834-8747  
(800) 837-9713

**MEADVILLE, PA**  
11377 Mercer Pike  
Meadville, PA 16335  
Ph: 814-724-7746  
Fx: 814-724-7747  
(800) 724-7751

**CLEARFIELD, PA**  
1729 Industrial Park Rd.  
P.O. Box 1206  
Clearfield, PA 16830  
Ph: 814-765-9684  
Fx: 814-765-1577  
(800) 252-3585

**FAIRMONT, WV**  
274 Van Kirk Drive  
Fairmont, WV 26554  
Ph: 304-534-3306  
Fx: 304-534-5079  
(800) 837-1713

**AKRON, OH**  
1250 Triplett Blvd.  
Akron, OH 44306  
Ph: 330-724-1111  
Fx: 330-724-1895  
(800) 826-0673



**Point Spring &  
Driveshaft Co.**  
Since 1926

follow us on social media



Point Spring &  
Driveshaft Co.



@Pointspring1926