



Point Spring & Driveshaft Co.

Since 1926

PARTS • SERVICE • EXPERIENCE • SOLUTIONS



Save on maintenance, invest in performance

The seal offers exceptional performance in virtually all operating conditions. It's a unitized, one-piece hand installable seal that has three metal unitizer rings for damage free installation. This seal uses an advanced HNBRX material that provides low friction, excellent high heat capability, outstanding wear resistance, and broad compatibility with synthetic lubricants. Its low friction and high rolling efficiency provides improved fuel economy and low emissions. Ideal for fleets looking for maximum uptime, lowest cost per mile and the Best Seal Designed for Heavy Duty Operations.



35058XT

Part Number	Description	Price
38776XT	Scotseal XT	51.99
46300XT	Scotseal XT	38.99
47691XT	Scotseal XT	52.99
43761XT	Scotseal XT	50.99
35058XT	Scotseal XT	41.99

www.pointspring.com

Promotional pricing valid through 3/31/2025



IMI Equal Flexx Tire Balance

IMI provides Equal Flexx, an innovative tire maintenance product. Equal Flexx is an internal balancing compound that provides continuous balancing within the tire/wheel.

As a truck tire vibrates, energy is created. Equal Flexx absorbs this energy and the accompanying vibrations within the tire.

Features

- Eliminates the need for wheel weight balancing, saving fleets time and money.
- Balanced tires create less vibration, leading to less wear and tear on the truck.
- Provides even tire tread wear, better fuel economy, and a smoother ride for your driver.

Easy Installation

- When mounting a new tire, simply drop in a bag of Equal Flexx.
- Each package comes with 1 valve stem sleeve and 1 filtered valve core.



Valve stem sleeve and filtered valve core included in each pack



Bulk cartons available



SPICER®



Spicer® Commercial Vehicle All-Makes Steer Axle Program



All-New Products. All-Makes Coverage.

The Spicer brand is trusted the world over for OE-quality service parts. Our line of OE quality steer axle products brings you optimal coverage for all makes, and the durability and reliability you can count on.



Spicer® All-Makes Steer Axle Program

Steer Your Business with Spicer King Pin Kits, Tie Rod Ends, and Drag Links.

The Spicer® All-Makes Steer Axle Program offers genuine OE quality king pin kits, tie rod ends, and drag links for all makes of vehicles, while providing incredible savings. In addition, you get the technical assistance and product support you expect from the global leader in axle and driveline solutions.

This Spicer program also offers genuine OE knuckles, beams, and complete axles for Dana's Spicer brand steer axles. Get original equipment quality and coverage all from one brand you can trust. Demand the best. Demand Spicer!

All-Makes Coverage for:

- Detroit Axle (Axle Alliance)
- Kenworth
- Spicer Steer Axle
- White
- Ford Heavy Truck
- Westport
- Navistar
- Hendrickson
- Meritor Steer Axle
- Isuzu
- Volvo and Mack Truck
- Bus
- Freightliner/Western Star
- GMC
- Peterbilt
- Dodge

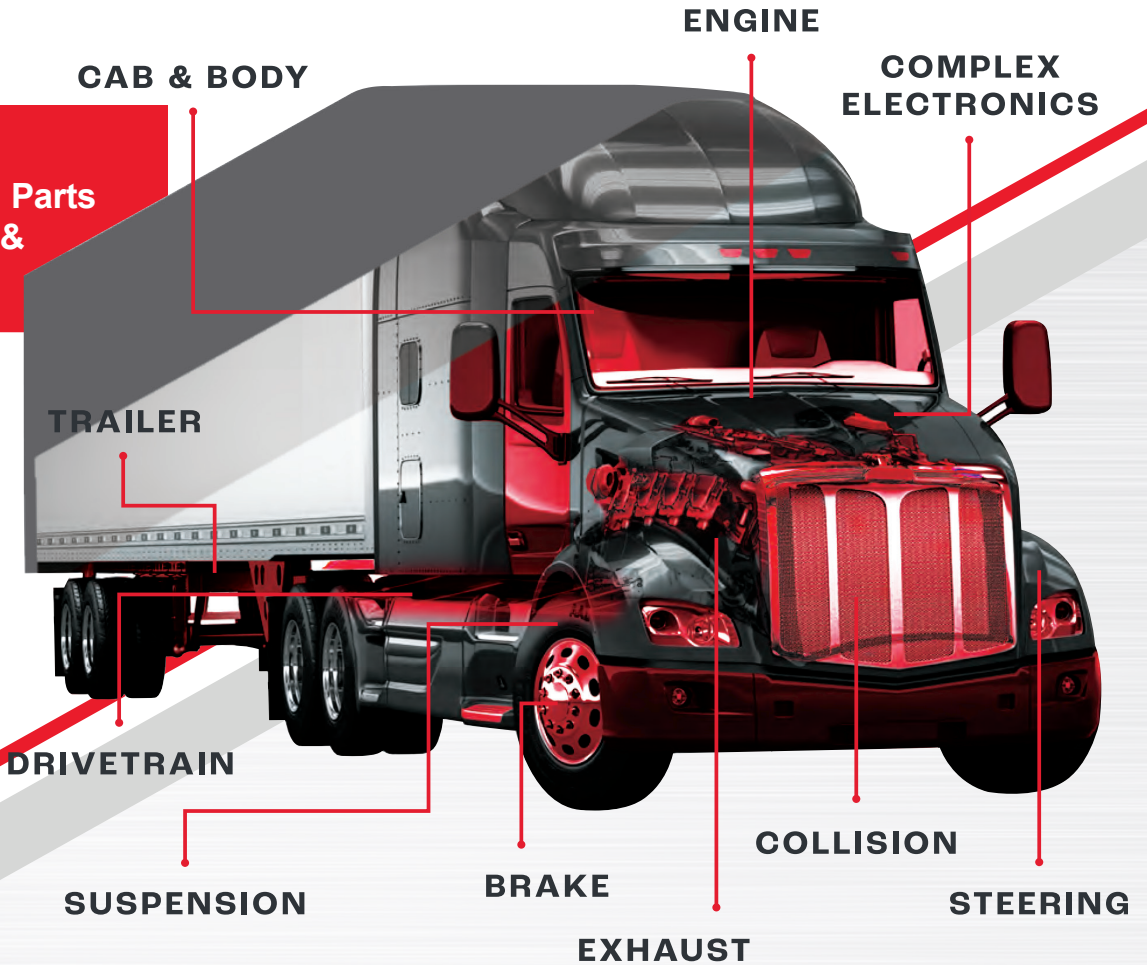


For more information on this or any other Spicer driveline products, contact your sales representative or visit SpicerParts.com.

For service technicians who prefer bronze bushings, we offer the expanded coverage of bi-metal bushings for Spicer axles.

You can find all of the following with Dayton Parts through Point Spring & Driveshaft!

- Brake & Wheel End
- Hitch & Coupling
- Leaf Spring
- Cargo Restraint
- Clutches
- Suspension
- Drivelines
- Exhaust
- Steering
- Trailer
- And More!



30K+
PARTS

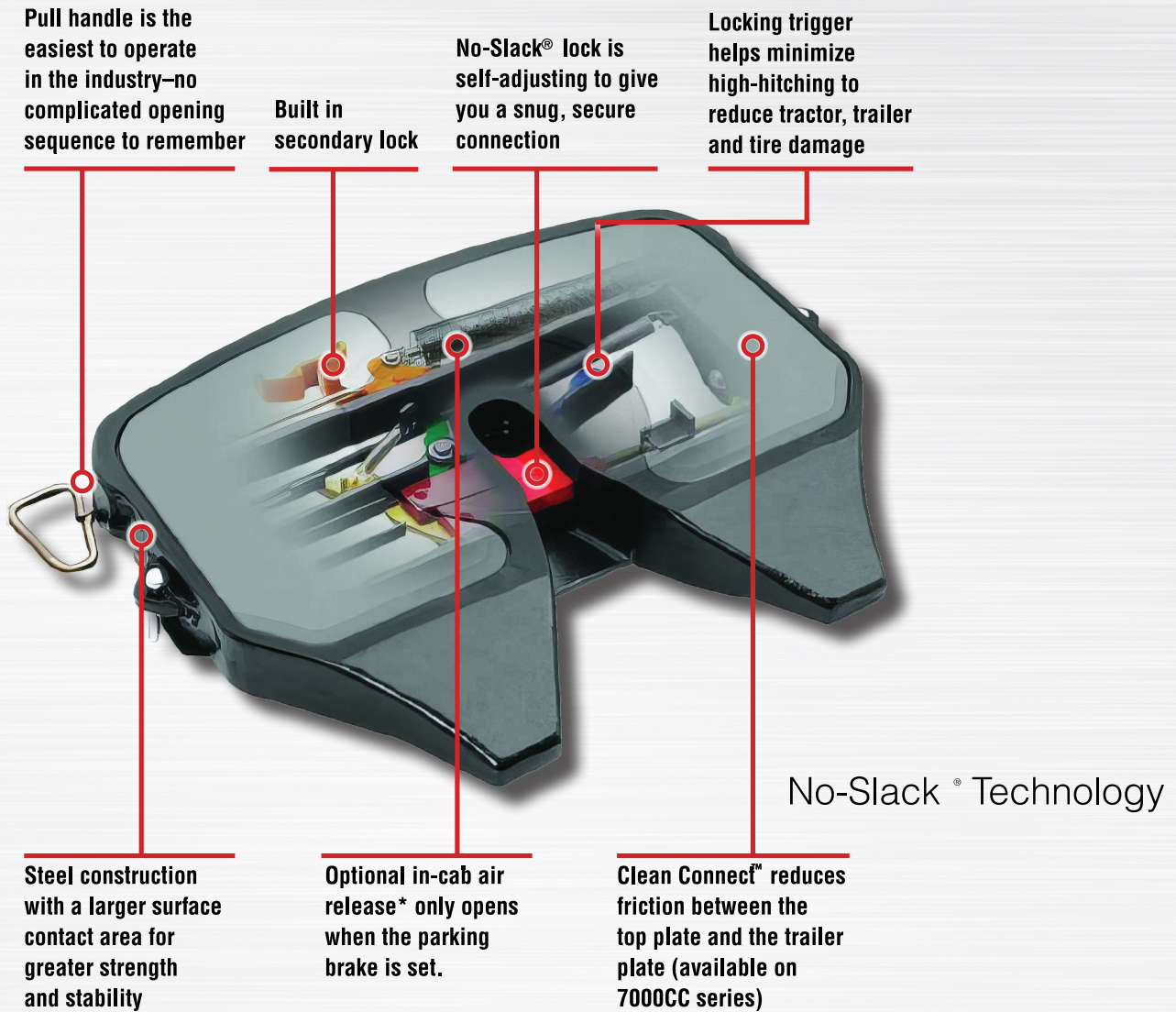
across 30+ categories
and growing





Fontaine Fifth Wheel No-Slack®

The world's only self-adjusting fifth wheel lock



**For new truck builds, Fontaine supplies an air cylinder in the fifth wheel. All other components for in-cab air release are supplied and installed by the truck OEM. For retrofitting standard release models, contact your Fontaine sales representative.*



For weight savings top plates, mounts and assemblies, look for this symbol.



For new innovative Fontaine Fifth Wheel products look for this symbol



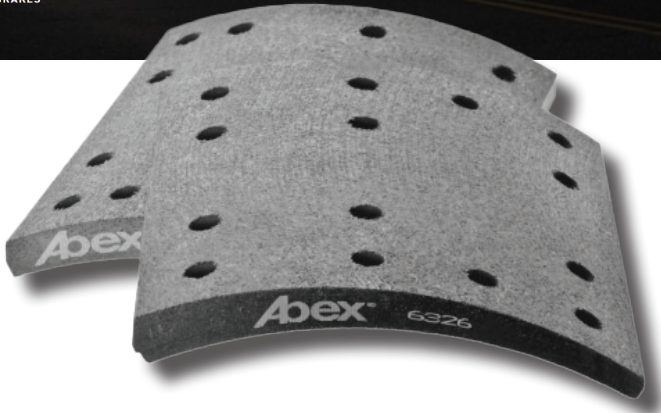
Abex
National
Oil Seals & Bearings

MONROE
WAGNER

Abex

MAXIMUM BRAKING POWER

HEAVY DUTY BRAKES



Abex® friction products are engineered for maximum braking power and minimum cost per mile. Abex is the ideal choice for heavy duty braking performance.



TAILORED FOR THE RIDE EXPERIENCE

Our full line of aftermarket products - from the internal valving technologies to springs and top-mount components - are engineered to address each vehicle's specific ride performance and handling profile to provide safe, comfortable, precise handling and control.

National
Oil Seals & Bearings

PREMIUM SOLUTIONS

SEALS & BEARINGS

The National® brand of oil seals and bearings has built a reputation as one of the most respected names in the industry. We provide premium quality, no-compromise solutions for virtually every wheel-end repair.



WAGNER



LIGHTING

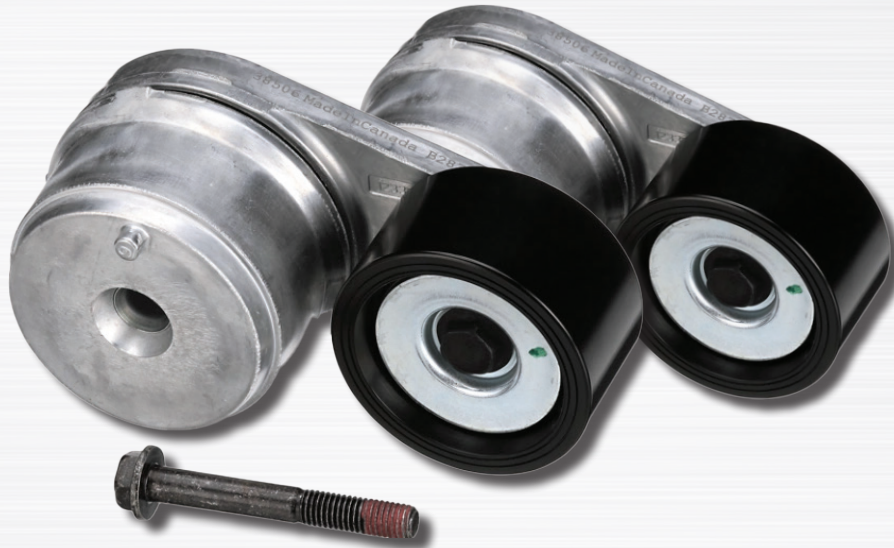
Whether you are driving at night, in the fog or in heavy snow, you can count on Wagner® - The Automotive Lighting Experts - to lead the way. From headlights to taillights and all the other various lights in your vehicle, Wagner delivers superior quality with premium products that are Department of Transportation (DOT) compliant and meet or exceed Society of Automotive Engineers (SAE) standards.





When it comes to rugged applications in severe conditions, FleetRunner™ Heavy Duty Belt Tensioners are top of the line. For these belt tensioners, there's no such thing as a too-heavy application. Tested to withstand and excel under extreme pressure, get up to three times the life cycle with Gates over the aftermarket providers.

- Double Row Bearings (twin rows of bearings) carry more load and last up to three times longer than two separate bearings.
- Labyrinth Seal technology prevents contamination of internal parts improving durability and increasing service life.
- A machined Steel Pulley reduces surface wear while shielding the internal bearing from external contaminants and damage.
- A patented Damping Mechanism provides maximum stability, reduces vibration, and increasing service life.



Tensioners

Part Number	Description	Price
38587	Belt Tensioner - 76.3 mm x 17 mm x 57 mm	140.99
38702	Belt Tensioner - 75 mm x 30 mm x 32.5 mm	95.99
38610	Belt Tensioner - 75 mm x 30 mm x 40 mm	150.99
38506	Belt Tensioner - 75 mm x 30 mm x 40 mm - W/ Bolt	148.99
38517	Belt Tensioner - 75 mm x 30 mm x 32.5 mm - W/ Bolt	95.99

INFINITY
ENGINEERED PRODUCTS

GOODYEAR
AIR SPRINGS

SUSPENSION PRODUCTS™



**INNOVATIVE DESIGN.
INDUSTRY-LEADING
PERFORMANCE.**



DELIVERING COMFORT AND PERFORMANCE

Infinity Engineered Products Super Cushion® Rolling Lobe Air Springs feature heavy-duty materials and construction to deliver industry-leading vibration isolation, weight savings and longevity. Designed for unrivaled comfort and performance, they reduce driver fatigue, decrease component wear, lower downtime and improve safety.

Superior Rubber Chemistry

Chemical additives infused into natural rubber walls provide exceptional ozone resistance, resulting in less flex-cracking and longer service life.

Reduced Weight

Innovative materials and design technology allow Super Cushion Air Springs to weigh less than competitive products for added fuel savings.

Bracket Dimples

Non-elongated design provides a more secure mounting for the air spring, increasing longevity and reducing vibration and misalignment.

Internal Wall Cord

High-strength, extra-tight cord provides exceptional wall and internal splice strength.

Comfort

Reduced driver fatigue and increased safety.

Equipment Longevity

Improved vibration isolation reduces wear and tear on truck and trailer components.



KIT MASTERS

800-810-9110

KIT MASTERS FAN CLUTCH EXPERTS

www.KitMasters.com

FAN CLUTCH REBUILD KITS



GOLDTOP FAN CLUTCHES

- Highest torque rating
- Less time to install
- Premium internal components

Part numbers: 14-256 & 14-256-1



2-SPEED GOLDTOP

- Saves horsepower & fuel
- Longer fan clutch life
- One kit covers both 2.5" & 5" fan pilots

Part numbers: 24-256 & 24-256-1

Our GoldTop® fan clutches are unmatched by any competitors (new or remanufactured) & pack over

5,000 INCH-POUNDS of Torque!



A TRUE FAIL-SAFE DESIGN

Our patented Auto Lock feature **AUTOMATICALLY ENGAGES** the fan clutch when the friction material nears the end of its life, preventing on-the-road failures.

KYSOR-STYLE FAN CLUTCHES

DUAL SEAL PROTECTION

Our extended rear-air shaft allows for a second o-ring. This second o-ring is made from urethane which is resistant to wear caused by motion.

(on rear air models)



Rear Air
8901N

Rear Air
8905N

Front Air
8001N



OEM Part #	Kit Masters #
1090-09000-01	8001N
1090-09000-05	8001N
1090-09650-01	8901N
1090-09750-01	8905N



MERITOR®

MERITOR® AFTERMARKET PRODUCT PORTFOLIO



Meritor offers an extensive portfolio of genuine and all-makes parts for commercial vehicles, with the quality and reliability you expect from an industry leader. For fast access to parts information, tools and resources, visit MeritorPartsXpress.com.

PRODUCT LINE OFFERINGS

BRAKES AND WHEEL-ENDS

Drum Brakes and Wheel-ends

- ⌋ Brake shoes/kits
- ⌋ Hubs/drums
- ⌋ Wheel seals
- ⌋ Bearings
- ⌋ Camshafts
- ⌋ Wheel bearing adjustment system
- ⌋ Automatic and manual slack adjusters
- ⌋ ABS sensors
- ⌋ Brake Chambers
- ⌋ Wheel attaching components

Disc Brakes

(Hydraulic and Air)

- ⌋ Calipers
- ⌋ Rotors
- ⌋ Disc pads
- ⌋ Brake hardware

AIR SYSTEMS

- ⌋ Compressors
- ⌋ Air dryers
- ⌋ Valves
- ⌋ Cartridges



TRAILER AXLES AND SUSPENSIONS

- ⌋ Trailer axles
- ⌋ Bushings
- ⌋ Meritor Tire Inflation Systems (MTIS™)
- ⌋ Shock absorbers
- ⌋ Air springs
- ⌋ Equalizers
- ⌋ Torque arms
- ⌋ Hanger brackets
- ⌋ GAFF polyurethane components

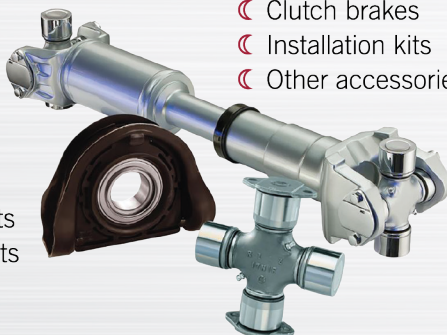
DRIVETRAIN

Drivelines

- ⌋ Universal joints
- ⌋ Center bearings
- ⌋ Tubing
- ⌋ Yokes
- ⌋ Flanges
- ⌋ Spline plugs
- ⌋ Bearing stub shafts
- ⌋ Yoke shafts

Clutch

- ⌋ 14" assemblies
- ⌋ 15.5" assemblies
- ⌋ Clutch brakes
- ⌋ Installation kits
- ⌋ Other accessories



Drive Axles

- ⌋ Axles
- ⌋ Differentials
- ⌋ Gear sets
- ⌋ Gearing
- ⌋ Seals and bearings
- ⌋ Overhaul kits
- ⌋ Axle shafts

STEER AXLES

- ⌋ FastSet™ and ReadySet™ no-ream king pin kits
- ⌋ Genuine and all-makes king pin kits
- ⌋ Tie rod ends
- ⌋ Drag links
- ⌋ Cross tubes
- ⌋ Steering arms

Vehicle models, trademarks, brands and names depicted herein are the property of their respective owners, and may not be associated with Cummins Inc., Meritor, Inc. or its affiliates.



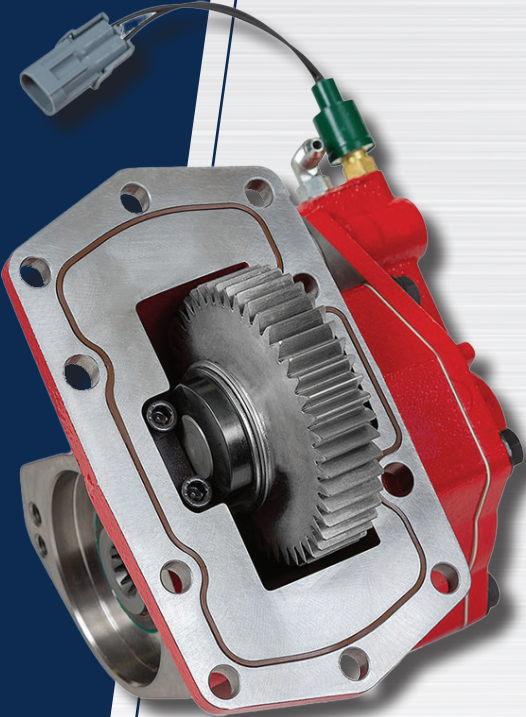
Cummins Inc.
Box 3005
Columbus, IN 47202-3005
U.S.A.

cummins.com | MeritorPartsXpress.com

SP-2429
Bulletin 6590931 Produced in U.S.A. 10/24
©2024 Cummins Inc.



Parker Chelsea is a market leader in power take-off (PTO) products for the truck and mobile vocational markets. We developed our PTO valves specifically for the application of controlling the engagement and disengagement of power take off drives. These valves can be either chassis- or panel-mounted and are available with connectors and tubing, ready to install. We offer a complete line of power take-offs for North America, Asia Pacific, Australia, China, India and Europe, including cast iron 6-bolt, 8-bolt, countershaft, split-shaft, powershift and front-mount applications. Features include air, cable lever or electric shift options, overspeed control and flanges for direct or remote mounting to hydraulic pumps, blowers, water pumps, product pumps and generators. The Parker Chelsea line of wetline reservoirs includes polyethylene, aluminum and steel tanks, available in upright, saddle-mount or side mount configurations. Our cast iron, roller bearing dump pumps can handle pressures up to 2500 psi and flows to 33 gpm at 1200 rpm, and include an integral dump valve.



210FMMFP-B455

Available through Point Spring & Driveshaft Co.!
Most Popular Power Take Offs Sold through PSD

Part Number	Description
210FMMFP-B455	Ford F250-600 10R140 Diesel; Model Year 2020-Current 2 or 4-wheel drive
210GMMFP-B455	Ford F250-600 10R140 Gas; Model Year 2020-Current 2 or 4-wheel drive
489XFAHX-V3XK	8-bolt mechanical shift PTO; Applications such as Eaton transmissions
489QFMEX-66RK	8-bolt mechanical shift PTO; Applications such as Eaton Endurant transmissions
281GGFJP-B5RK	10-bolt powershift PTO; Applications such as Allison 3000/4000 transmissions
281GCFJP-B5RK	10-bolt powershift PTO; Applications such as Allison 3000/4000 transmissions

WHEEL END

HUB SEAL

REFERENCE CHART



- Axle-Installed
- Long-Life/High-Performance
- Predominant at OE Trailer Manufacturers



DISCOVER XR

- Hub-Installed
- Long-Life
- High Performance Expectations



Voyager

- Hub-Installed
- Normal Replacement Intervals
- Regular Duty



GRIT GUARD

- Hub-Installed (with Axle Ring)
- Rugged and Durable
- Worn or Damaged Axles

SKF to STEMCO

SKF	GUARDIAN HP HUB-SEAL	DISCOVER XR	VOYAGER	GRIT GUARD/STD. WHEEL SET	SKF	GUARDIAN HP HUB-SEAL	DISCOVER XR	VOYAGER	GRIT GUARD/STD. WHEEL SET
28758	308-0866		383-0166	382-8066	42673	309-0904		393-0104	392-9112
31281				372-7049	43752			373-0144	372-7095
34386	309-0935				43753			373-0144	372-7095
34387	309-0935				43754			373-0144	372-7095
34972					43761	308-0864	383-0464	383-0164	382-8064
34975					43763	308-0864	383-0464	383-0164	382-8064
34999				392-9036	43764	308-0864	383-0464	383-0164	382-8064
35000				392-9036	43860				392-9096
35058	308-0836	383-0436	383-0136	382-8036	43861				392-9096
35059	308-0836	383-0436	383-0136	382-8036	43865				392-9092
35066	308-0836	383-0436	383-0136	382-8036	43875	309-0973	393-0473	393-0173	392-9131
35102	308-0836	383-0436	383-0136	382-8036	45097	309-0903		393-0103	392-9094
36357			383-0171		45093	309-0903		393-0103	392-9094
36358			383-0171		45099	309-0903		393-0103	392-9094
36365			383-0171		45102			383-0156	2
36365/455037					45103			383-0156	
38747	309-0912			392-9099	45108	309-0903		393-0103	392-9094
38748				392-9099	45152	3	309-0973	393-0473	393-0173
38750				392-9099	45162/455030				372-7015
38776	309-0912		393-0112	392-9099	46300	307-0743	373-0443	373-0143	372-7097
38779	309-0912		393-0112	392-9099	46304	307-0743	373-0443	373-0143	372-7097
38780	309-0912		393-0112	392-9099	46305	307-0743	373-0443	373-0143	372-7097
38783	309-0912		393-0112	392-9099	46308	307-0743	373-0443	373-0143	372-7097
39977/455031			383-0139*		46390/450208				372-7022
39979			393-0139*		47691	309-0973	393-0473	393-0173	392-9098
39990			383-0139*		47692	309-0973	373-0443	393-0173	392-9098
39988/455031			383-0139*		47693	309-0973	373-0443	393-0173	392-9131
40129	307-0713		373-0113	372-7098	47695	309-0973	373-0443	393-0173	392-9131
40133	307-0713		373-0113	372-7098	47697	309-0973	373-0473	393-0173	392-9131
40136	307-0713		373-0113	372-7098	47699				392-9087
40146	307-0713		373-0113	372-7098	48690			393-0134	
42622	307-0723	373-0423	373-0123	372-7099	48691			393-0134	
42623	307-0723	373-0423	373-0123	372-7099	48792				320-1028
42624				372-7091	52658			393-0148	392-9089
42627	307-0723	373-0423	373-0123	372-7099	52664			393-0148	392-9089
42631	307-0723	373-0423	373-0123	372-7099	55177				392-9053
42671	309-0904		393-0104	392-9112					
42672	309-0904		393-0104	392-9112					

Outrunner to STEMCO

OUTRUNNER	GUARDIAN HP HUB-SEAL	DISCOVER XR	VOYAGER	GRIT GUARD/STD. WHEEL SET	OUTRUNNER	GUARDIAN HP HUB-SEAL	DISCOVER XR	VOYAGER	GRIT GUARD/STD. WHEEL SET
301	307-0713		373-0113	372-7098	856	309-0903		393-0103	392-9094
302	307-0723	373-0423	373-0123	372-7099	857			383-0156	
303	307-0743	373-0443	373-0143	372-7097	859	307-0743	373-0443	373-0143	372-7097
304	309-0973	393-0473	393-0173	392-9131	861	309-0973	393-0473	393-0173	392-9131
305	308-0836	383-0436	383-0136	382-8036	863	308-0864	383-0464	383-0164	382-8064
306	309-0912		393-0112	392-9099	88319	309-0973	393-0473	393-0173	392-9131
847	308-0836	383-0436	383-0136	382-8036	UZ0301E0	307-0713		373-0113	392-7098
848	309-0912			392-9099	UZ0302E0	307-0723	373-0423	373-0123	372-7099
849	309-0912		393-0112	392-9099	UZ0303E0	307-0743	373-0443	373-0143	372-7097
850	307-0713		373-0113	372-7098	UZ0304E0	309-0973	393-0473	393-0173	392-9131
851	307-0723	373-0423	373-0123	372-7099	UZ0305E0	308-0836	383-0436	383-0136	382-8036
852	309-0904		393-0104	392-9112	UZ0306E0	309-0912		393-0112	392-9099
853			373-0144	372-7095					
854				392-9092					

- D Drive Application
- T Trailer Application
- F Front Application
- 1 With 364-6402
- 2 For IHC FA-109 1979 and up with spoke wheel use 308-0855 Guardian Set
- 3 With 364-6435
- 4 Ring no longer available

*The kit part number is 383-8139 and contains the steel spindle donut with the correct O-ring. The O-ring is what typically leaks on this application and there are several sizes of the donuts from various manufacturers.

National to STEMCO

NATIONAL	GUARDIAN HP HUB-SEAL	DISCOVER XR	VOYAGER	GRIT GUARD/STD. WHEEL SET	NATIONAL	GUARDIAN HP HUB-SEAL	DISCOVER XR	VOYAGER	GRIT GUARD/STD. WHEEL SET
370001A (380001A)	308-0836	383-0436	383-0136	382-8036	370047A	309-0935			
370003A (380003A)	309-0973	393-0473	393-0173	392-9131	370048A (380048A)	308-0864	383-0464	383-0164	382-8064
370005A				320-2115	370065A (380065A)	307-0723	373-0423	373-0123	372-7099
370006A				392-9087	370069A			393-0148	392-9089
370011A			383-0171		370086A	309-0973	393-0473	393-0173	392-9131
370011A/AR4					370107A				372-7091
370019A				392-9092 (Mack)	370120A/AR23				392-9053
370019A				392-9096	370131A (380131A)			383-0156	2
370022A (380022A)	309-0903		393-0103	392-9094	370132A				
370023A (380023A)	309-0912		393-0112	392-9099	370150A	308-0866		383-0166	382-8066
370024A				392-9099	370165A				392-9099
370025A (380025A)	307-0743	373-0443	373-0143	372-7097	370169A				392-9036
370026A/AR2				372-7022	370182A	308-0864	383-0464	383-0164	382-8064
370031A (380031A)	309-0904		393-0104	392-9112	370192A				372-7015
370033A/AR12			383-0139*	382-8039	370195A			393-0134	
370034A	309-0973	393-0473	393-0173	392-9131	370198A/AR25			383-0139*	
370036A (380036A) T	307-0713		373-0113	372-7098	370338A T				372-7095
370037A			373-0144	372-7095	370349A D	307-0713		373-0113	372-7098
					376590A	307-0723	373-0423	373-0123	372-7099
					386590A				372-7099

Triseal to STEMCO

TRISEAL	GUARDIAN HP HUB-SEAL	DISCOVER XR	VOYAGER	GRIT GUARD/STD. WHEEL SET	TRISEAL	GUARDIAN HP HUB-SEAL	DISCOVER XR	VOYAGER	GRIT GUARD/STD. WHEEL SET
65024U				392-9099	69597 (70597)	307-0713		373-0113	372-7098
65030U			393-0148	392-9089	69598 (70598)	307-0743	373-0443	373-0143	372-7097
65056U	309-0973	393-0473	393-0173	392-9131	69599 (70599)			373-0144	372-7095
65060U	307-0743	373-0443	373-0143	372-7097	69628			383-0139	
65071U	309-0904		393-0104	392-9112	69642				382-8063
65078U			383-0156		69645	308-0866			382-8066
65092U	308-0864	383-0464	383-0164	382-8064	69689				382-8028
65111U	309-0935				69690				
65152U	309-0912		393-0112		69696			383-0156	
65184U				392-9092	69697	308-0864	383-0464	383-0164	382-8064
65261U	307-0713		373-0113	392-7098	69699	308-0836	383-0436	383-0136	382-8036
65262U	307-0723	373-0423	373-0123	372-7099	69781 (70781)			393-0148	392-9089
65263U	308-0836	383-0436	383-0136	382-8036	69785	309-0935			
65270U	309-0903		393-0103	392-9094	69786				392-9036
65283U				392-9087	69788 (70788)	309-0904		393-0104	392-9112
65294U			383-0139		69789 (70789)				392-9087
65298U				372-7095	69792				392-9092
69510	307-0713		373-0113	372-7098	69794 (70794)	309-0912		393-0112	392-9099
69512				372-7015	69796 (70796)	309-0903		393-0103	392-9094
69520	307-0723	373-0423	373-0123	372-7099	69797 (70797)				392-9096
69539				372-7049	69799 (70799)	309-0973	393-0473	393-0173	392-9131
69541 (70541)				372-7091					
69594				372-7022					
69596 (70596)	307-0723	373-0423	373-0123	372-7099					

POINT SPRING & DRIVESHAFT CO. LOCATIONS

NEVILLE ISLAND, PA
7309 Grand Avenue
Neville Island, PA 15225
Ph: 412-264-6714
Fx: 412-264-6722
(800) 837-4713

NEW CASTLE, PA
1001 Harbor Street
New Castle, PA 16101
Ph: 724-658-9076
Fx: 724-658-8746
(800) 837-8713

TROY, PA
68 Canton Street
Troy, PA 16947
Ph: 570-297-5555
Fx: 570-297-5510
(855) 297-6380

SARVER, PA
555 North Pike Road
Sarver, PA 16055
Ph: 724-352-3340
Fx: 724-352-5311

INDIANA, PA
1849 South Sixth
Street Suite 5
Indiana, PA 15701
Ph: 724-463-3710



Point Spring & Driveshaft Co.
Since 1926

follow us on social media

