



Point Spring & Driveshaft Co.

Since 1926

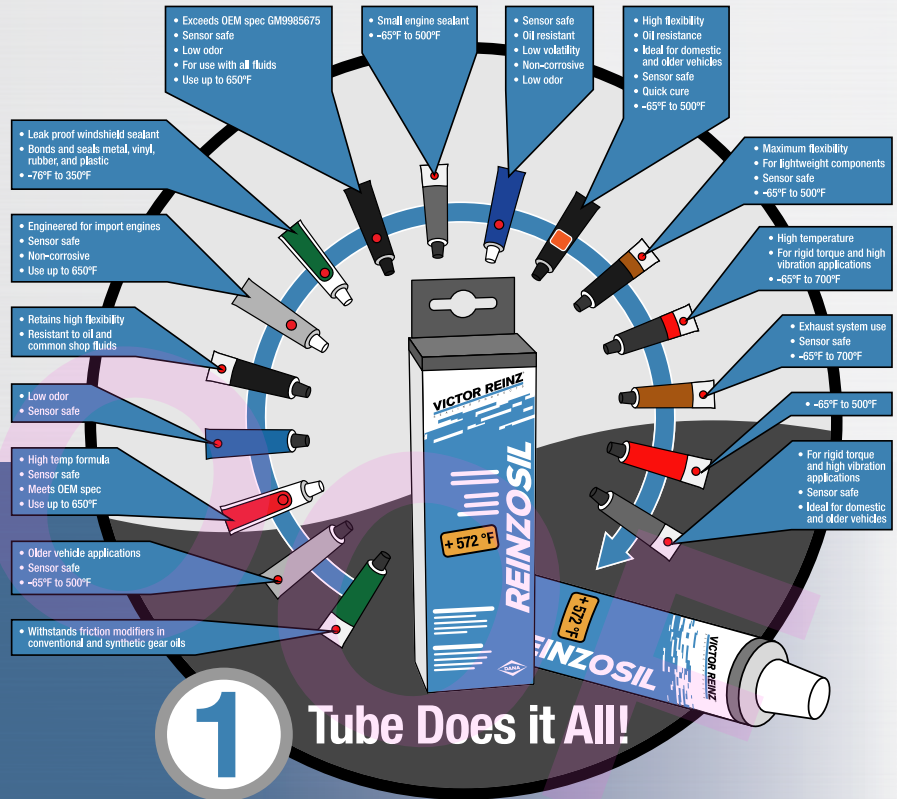
PARTS • SERVICE • EXPERIENCE • SOLUTIONS



One Tube Does it All

While there is a huge variety of RTV silicones on the market to choose from, high-quality, versatile Reinzosil offers a “one-tube” solution. Effective SKU consolidation saves you inventory space and dollars, and avoids ordering hassles.

- Reinzosil can replace a dozen or more different varieties of RTV
- Rather than various tube sizes that clutter your shelves, the 70 ml “shop-sized” Reinzosil tube is the correct volume for most customer applications
- Resistant to temperatures from -58°F to 482°C, briefly up to 572°F (-50°C to 250°C, briefly to 300°C)
- Insignificant shrinkage and loss of mass
- No corrosion
- Fast curing
- Non-hazardous substance
- Will not harm oxygen sensors
- Sealing gap > 0.15 mm



Durable. Flexible. Versatile. Reinzosil Applications

- Two-dimensional flat surfaces where there is a sealing gap up to 0.15 mm, such as gasket intersections
- Components originally sealed with RTV by the manufacturer, including intake manifolds, valve covers, and oil pans
- Use as gasket maker, in addition to a gasket with installation, for household uses, and more

Part No.	Description	Price
70-31414-10	70 ml - Reinzosil RTV Silicone	\$5.99
70-31414-20	200 ml - Reinzosil RTV Silicone	\$26.99
70-31414-40	310 ml - Reinzosil RTV Silicone	\$28.99

www.pointspring.com










Promotional pricing valid through October 31, 2024



Abex® friction products are engineered for maximum braking power and minimum cost per mile making Abex the ideal choice for heavy duty braking performance

OE Engineering • Best in Class • Lowest Cost per Mile • Fleet Validated

Product Offering

RSD - Reduced Stopping Distance Part Number GAWR RNLL 6326 20,000 lbs. RX 6297 23,000 lbs.		<ul style="list-style-type: none"> Advanced Technology Proven to Stop in 250 ft FMVSS121 Compliant Validated On-Vehicle Crack Resistant 	 Every tractor built after August 1, 2013 has an RSD OE requirement to stop in 250	
OE Grade Part Number GAWR EN 6008-1 20,000 lbs. EX 6148 23,000 lbs.		<ul style="list-style-type: none"> Best Performance Heavy Duty Applications Exceptional Lining and Drum Life Crack Resistant 		
Premium Part Number GAWR AN 6166 20,000 lbs. AX 6149 23,000 lbs.		<ul style="list-style-type: none"> Best Performance Heavy Duty Applications Superior Lining Drum Life Crack Resistant 		
Standard Part Number GAWR SN 6085 20,000 lbs. SX 6350 23,000 lbs.		<ul style="list-style-type: none"> Reliable Performance Heavy Duty Applications Good Lining Drum Life Crack Resistant 		
Problem Solvers For Noise, Heat & Stopping Power Solutions Part Number GAWR Part Number GAWR EL 20,000 lbs. RSC 23,000 lbs. RNLL 20,000 lbs. RX 23,000 lbs. SM 20,000 lbs. FT 26,000 lbs. SDA 23,000 lbs. RSM 29,000 lbs. SMC 23,000 lbs.		20 K School Bus Brake Engineered to provide quiet performance in vocational applications Applies to following part: • Abex 6011 EL 	23K Refuse Brake Engineered to provide excellent lining life and drum wear in stop-and-go duty cycles Applies to following part: • Abex 6098 SDA 	Fire Truck/Severe Service Designed to provide smooth braking at low and high speeds Applies to following parts: • Abex FT • Abex 6061 RSM • Abex 6260/6061 RSC • Abex 6297 RX 
Problem Solvers Part Number GAWR MAN 1616 24,500 lbs. MC 685/697 26,000 lbs. MQ 6133 26,000 lbs.		Transit Brake Designed for the duty cycle of city buses and highway coaches Applies to following part: • Abex 6133 MQ • Abex 685/697 MC (4715A/4728) • Abex 1616 MAN 		

Product List

RX Abex 6297	23K	RSD Certified*	EW Abex 6028	23K	OE Grade Wedge Brake
RNLL Abex 6326	20K	RSD Certified*	SMC Abex 6326	23K	Semi Met Combo
EX Abex 685	23K	Premium OE Grade	SM Abex 685	20K	Semi Met
EN Abex 6008-1	20K	Premium OE Grade	MC Abex 685 / 697	Transit	Transit - OE Grade Combo
AX Abex 6149	23K	Aftermarket Standard	MQ Abex 6133	Transit	Transit - Quiet
AN Abex 6166	20K	Aftermarket Standard	MX Abex 697	Transit	Transit - Standard
SN Abex 6085	23K	Standard Grade	MAN Abex 1616	Transit	Transit - OE Grade MAN Axle
SX Abex 6350	20K	Standard Grade			
SDA Abex 6098	23K	Premium OE Grade - Refuse			
EL Abex 6011	20K	Premium OE Grade - School Bus			
RSM Abex 6061	29K	Severe Service - Semi Met			
RSC Abex 6260/6061	23K	Severe Service - Combo			
FT Abex FT	26K	OE Grade Severe Service			
ED Abex 6028	26K	OE Grade Severe Service			
EH Abex 6040	26K	OE Grade Severe Service			

About Us...

Brake Lining Supply - A Point Spring Company is committed to remanufacturing dependable and economical brake shoes. By using OEM approved materials and testing methods, advanced technology and trained brake technicians, BLS brake shoes provide the superior balance and even braking required by today's hard driving truck systems and demanded by professionals like you.

Brake Lining Supply - A Point Spring Company - 1729 Industrial Park Road Clearfield, PA 16830

POINT SPRING & DRIVESHAFT CO. LOCATIONS

NEVILLE ISLAND, PA
 7309 Grand Avenue
 Neville Island, PA 15225
 Ph: 412-264-6714
 Fx: 412-264-6722
 (800) 837-4713

NEW CASTLE, PA
 1001 Harbor Street
 New Castle, PA 16101
 Ph: 724-658-9076
 Fx: 724-658-8746
 (800) 837-8713

TROY, PA
 68 Canton Street
 Troy, PA 16947
 Ph: 570-297-5555
 Fx: 570-297-5510
 (855) 297-6380

SARVER, PA
 555 North Pike Road
 Sarver, PA 16055
 Ph: 724-352-3340
 Fx: 724-352-5311

INDIANA, PA
 1849 South Sixth
 Street Suite 5
 Indiana, PA 15701
 Ph: 724-463-3710

GREENSBURG, PA
 1967 Route 66
 Greensburg, PA 15601
 Ph: 724-834-0750
 Fx: 724-834-8747
 (800) 837-9713

MEADVILLE, PA
 11377 Mercer Pike
 Meadville, PA 16335
 Ph: 814-724-7746
 Fx: 814-724-7747
 (800) 724-7751

CLEARFIELD, PA
 1729 Industrial Park Rd.
 P.O. Box 1206
 Clearfield, PA 16830
 Ph: 814-765-9684
 Fx: 814-765-1577
 (800) 252-3585

FAIRMONT, WV
 274 Van Kirk Drive
 Fairmont, WV 26554
 Ph: 304-534-3306
 Fx: 304-534-5079
 (800) 837-1713

AKRON, OH
 1250 Triplett Blvd.
 Akron, OH 44306
 Ph: 330-724-1111
 Fx: 330-724-1895
 (800) 826-0673



Point Spring & Driveshaft Co.
 Since 1926

follow us on social media



Point Spring & Driveshaft Co.



@Pointspring1926

