



# Point Spring & Driveshaft Co.

Since 1926

**PARTS • SERVICE • EXPERIENCE • SOLUTIONS**



**Point Spring &  
Driveshaft Co.**  
Since 1926

## Mobile Brake and Wheel End Training

Using our mobile wheel end training truck, we are able to provide your technicians with three different types of wheel end training at YOUR FACILITY. Contact us for details about our wheel seal and bearing, foundation drum brake and NEW air disc brake training capabilities.

### Wheel Seal Installation and Bearing Adjustment:

- Function of wheel hubs. New School / Old School Technology
- Identify spindle and hub components
- Identify bearing and seal components
- Identify spindle lock nut systems
- Out-Of-Service criteria
- Seal Installation
- Bearing Adjustment
- Venting Wheel Ends

### Foundation Drum Brake:

- RSD - Reduced Stopping Distance brake systems
- Foundation Drum Brake Function
- Automatic slack adjuster - fit / function / installation
- How to choose brake friction
- Out-Of-Service criteria

### Air Disc Brake:

- ADB system identification
- ADB system fit / function / installation
- ADB brake adjustment
- ADB air chamber, rotor, and caliper review
- Out-Of-Service criteria



**www.pointspring.com**

Promotional pricing valid through 6/30/24





**Donaldson**  
FILTRATION SOLUTIONS

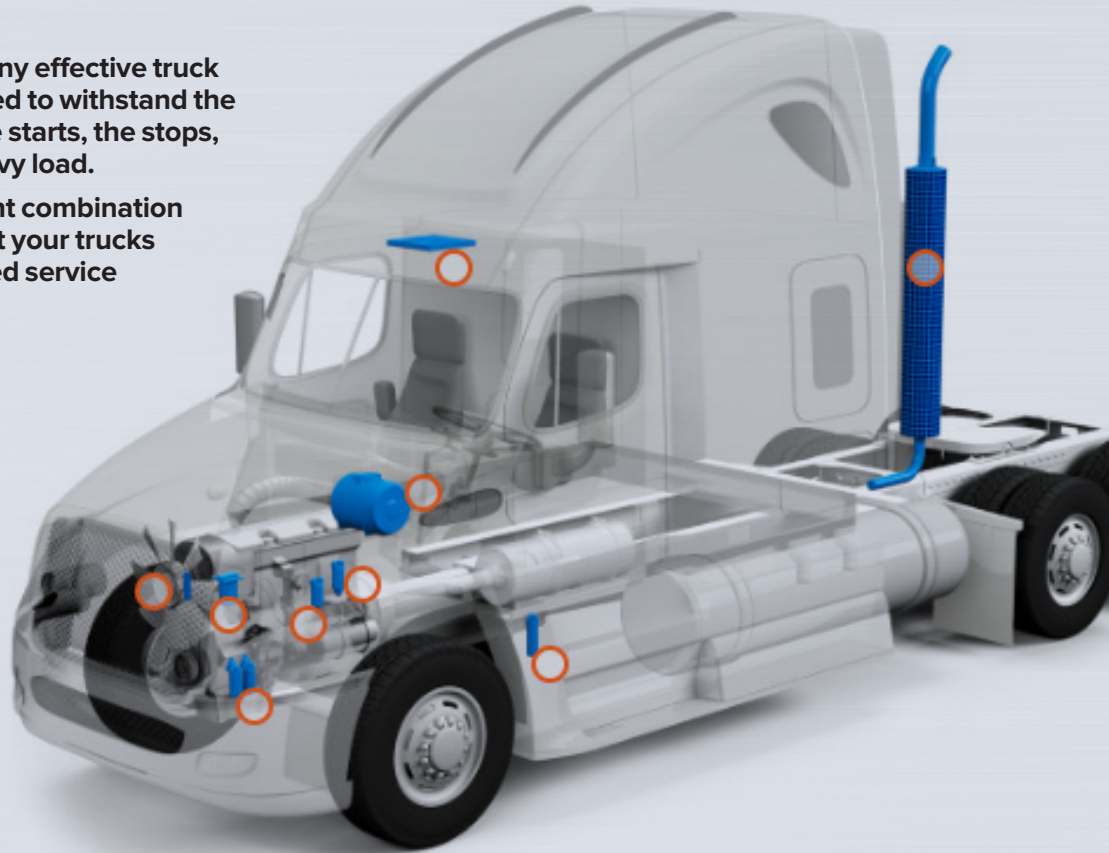
## Point Spring & Driveshaft is proud to announce that we are officially a Donaldson Filtration distributor!

### Applications

Filters are an important part of any effective truck maintenance program. They need to withstand the harsh demands of the road – the starts, the stops, the idling and the strain of a heavy load.

Donaldson filters deliver the right combination of quality and value that help get your trucks and buses to their next scheduled service without interruption.

- Heavy duty trucks
- Medium duty trucks
- Light duty trucks
- Vocational trucks
- School buses
- Municipal/Transit buses



Durable, rugged and built for the long haul, Donaldson replacement filters are manufactured to the same quality standards as the original.

- Complete coverage for the most popular engines and models
- Fuel, air intake, lube, cabin air, transmission and coolant filters
- Donaldson Blue® premium filters – Fuel, air, lube and coolant
- Exhaust coverage, including mufflers and accessories
- Programs and support from large fleets to owner/operators

*Stay tuned for more information*



# TIMKEN

## Keep Your Trucks Rolling

with Timken® MileMate® Bearing Sets



### Matched Cup and Cone Sets Extend Bearing Life

Built for superior performance and increased reliability, Timken® MileMate® matched cup and cone bearing sets help keep your fleet on the road. Precisely matched sets allow bearings to more evenly distribute loads, extending bearing life.

Timken matched sets help make it easier and faster to install the bearings correctly every time. Replacing bearings is faster with MileMate sets because the matching cup and cone arrive together in one box.

MileMate bearing sets meet or exceed original equipment manufacturers' specifications, including the specifications for ConMet® PreSet® hubs and Spicer® LMS™ hubs.

Timken Set No.	Timken Cone/Cone No.	Common Application Description	PRICE
SET401	572 / 580	Industry Standard - R Drive Axle - Outer Bearing	<b>\$51.99</b>
SET403	592A / 594A	Industry Standard - R Drive Axle - Inner Bearing	<b>\$61.99</b>
SET406	3720 / 3782	Industry Standard FF - Steer Axle - Outer Bearing	<b>\$28.99</b>
SET413	HM212011 / HM212049	Industry Standard FF - Steer Axle - Inner Bearing / Industry Standard - N Trailer Axle - Outer Bearing	<b>\$42.99</b>
SET414	HM218210 / HM218248	Industry Standard - N Trailer Axle - Inner Bearing	<b>\$63.99</b>
SET415	HM518410 / HM518445	Industry Standard P Trailer - Axle - Inner and Outer Bearing	<b>\$73.99</b>
SET423	6461A / 6420	Industry Standard FL - Steer Axle - Inner Bearing	<b>\$143.99</b>
SET424	555-S / 552A	Industry Standard FL - Steer Axle - Outer Bearing	<b>\$72.99</b>
SET427	NP026773 / NP899357	Set-Right FF Steer Axle - Inner Bearing / Set-Right N Trailer Axle - Outer Bearing (ConMet PreSet)	<b>\$50.99</b>
SET428	NP435398 / NP874005	Set-Right FF Steer Axle - Outer Bearing (ConMet PreSet)	<b>\$34.99</b>
SET429	NP363298 / NP034946	Set-Right R Drive Axle - Inner Bearing (ConMet PreSet)	<b>\$73.99</b>
SET430	NP053874 / NP840302	Set-Right R Drive Axle - Outer Bearing (ConMet PreSet)	<b>\$61.99</b>



**Point Spring & Driveshaft Co.**

Since 1926

Promotional pricing valid through 6/30/24



## REMANUFACTURED FAN CLUTCHES

All Kit Masters remans have a  
3 year / 300,000 Mile Warranty



Innovative design that will AUTOMATICALLY LOCK UP fan clutches when the friction material nears the end of its life.



### On/Off GoldTop®

- Highest torque rating
- Higher quality internal components
- Lower cost

GoldTop  
by Kit Masters



### 2-Speed GoldTop®

- Reduces the frequency of fan clutch engagements
- Horsepower Savings
- Improved Fuel Economy
- Longer Fan Clutch Life



## OUR GOLDTOP FAN CLUTCHES PACK 5,000 Inch-Pounds of Torque!

Part No.	Year	Manufacturer	Model	Engine	Price
99782-2	2010-2017	Kenworth	T660	Cummins ISX15, X15	\$1143.99
			T680 2" slant, T880 2" slant, T800W 2" slant		
			T800B-123, T700, T800B		
	2010-2013		T800W, T800B-123, T800B	Cummins ISX, ISX15, X15	
	2010-2017	Peterbilt	387, 386, 587, 579, NGP-367, 367	Cummins ISX15, X15	
			387, 367 HH, 367 SFFA, 367 SBFA, 386, 367 HH FEPTO	Cummins ISX, ISX15, X15	
91027	1985-1993	Freightliner	All Vehicle Models	Caterpillar 3406B	\$934.99
	1995-2000	Kenworth	N/A	Caterpillar 3406, 3176	
	1988-1998	Peterbilt	379, 378-119, COE, 378, All Vehicle Models	Caterpillar 3406, 3406B, 3406 ATAAC	
	1994-2001		379, 379-127, 379-119, 379-123, 379-131	Caterpillar 3406, 3176	
	1985-1998	Volvo	Autocar, Aero	Caterpillar 3406C, 3406, 3406E	
	1994-2001		N/A	Caterpillar 3406, 3176	
	1994-2001	Western Star	All Vehicle Models	Caterpillar 3406, 3176	
	1986-1996	International	8300	Caterpillar 3406 ATAAC	
	1991-1997	Volvo GM	WC, WCA	Caterpillar 3406, 3406B	

Part No.	Year	Manufacturer	Model	Engine	Price
91024	1991-1998	Freightliner	FLD 120, HCOE	Detroit Diesel Series 60	\$934.99
	1991-2001		All Vehicle Models		
	1991-1999		Classic, Classic XL, FLD 120, FLX 120		
	1991-2002	Kenworth	All Vehicle Models		
	1994-1999		W900L2		
	1996-1998	Sterling	N/A		
	1994-2000	Volvo	Aero		
99188	2002-2005	International	9z	Cummins ISX	\$791.99
99833-2	2007-2016	International	ProStar	Cummins ISX, ISX15, X15	\$1143.99
99334	2003-2007	Peterbilt	357-119, 378-119, 379-119	Caterpillar C15 ACERT, C16 ACERT	\$791.99
	2004-2007			CATERPILLAR C15	
99223	2002-2005	Freightliner	Century, C120, CT120, ST120, Columbia	Detroit Diesel Series 60	\$791.99
99589-2	2007-2017	Kenworth	W900B, W900L	Cummins ISX, ISX15, X15	\$1143.99
	2007-2021	Peterbilt	388, 367 HH, 389, 367		
91014	1992-2001	Kenworth	W900B2	Caterpillar 3406	\$934.99
	1992-2002	Kenworth	T800, T600		
98621	2007-2022	Freightliner	Coronado, Cascadia, Cascadia 125 BBC, 122SD	Detroit Diesel DD13, DD15, DD16	\$925.99
		Western Star	4900	Detroit Diesel DD15, DD16	



## ENSIGN

with Air Lumbar & Air Suspension

The Ensign series truck seat offers true comfort and durability in an affordable seat design. Built utilizing the same platform as our top selling truck seat, the Ensign offers most of the same features to provide a simpler, yet still effectively comfortable seat. Core features include an ergonomically designed seat foam with cushion extension and single chamber air lumbar.

Part No.	Model	Description	Price
51110.305	Ensign	High Back, Dual Armrests, Black Vinyl	<b>\$632.99</b>
51110.331	Ensign	High Back, Dual Armrests, Grey Forever Cloth	<b>\$624.99</b>
51110.335	Ensign	High Back, Dual Armrests, Black Forever Cloth	<b>\$624.99</b>



## CAPTAIN

with Air Lumbar & Ratcheting Armrests

The Captain series is built on the top-selling truck seat platform which is known for its ergonomic comfort and low cost of ownership. With the right combination of adjustments such as single chamber air lumbar, adjustable arm rests and rear cushion tilt, the Captain is ideal for most general trucking applications and features the 'chugger-snubber' seat isolator.

Part No.	Model	Description	Price
50764.305	Captain	High Back, Dual Armrests, Black Vinyl	<b>\$684.99</b>
50764.361	Captain	High Back, Dual Armrests, Gray Mordura Cloth	<b>\$713.99</b>
50764.365	Captain	High Back, Dual Armrests, Black Mordura Cloth	<b>\$703.99</b>



## CORSAIR®

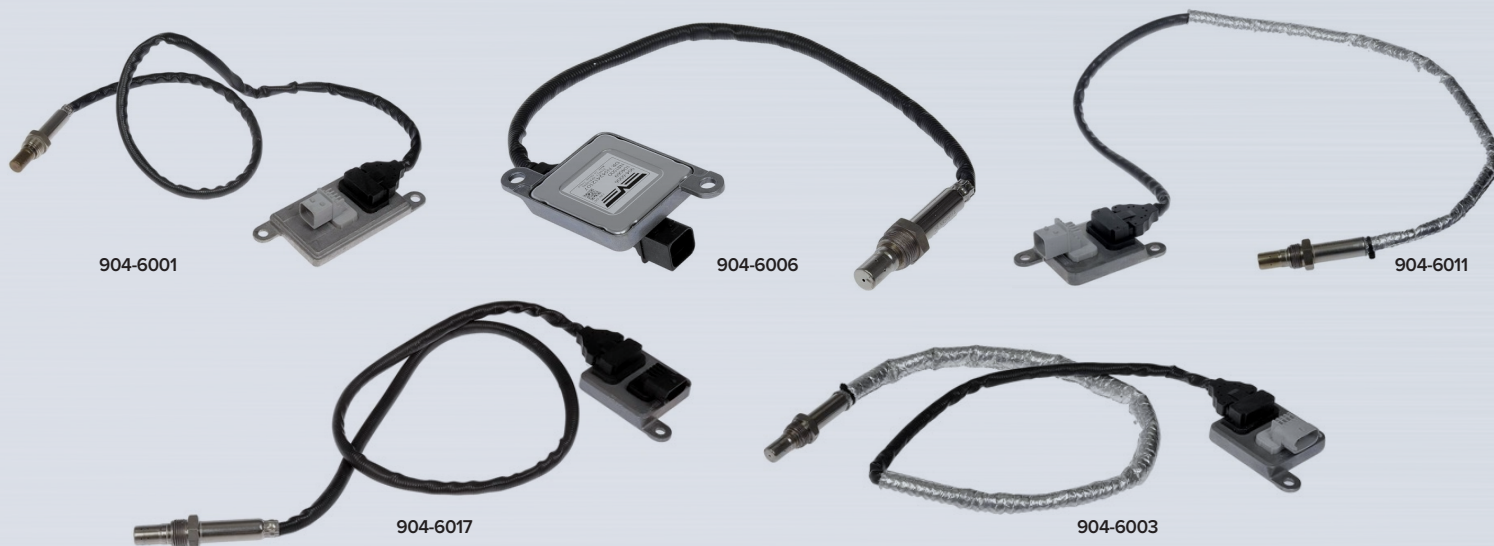
with optional BackCycler

The Corsair seat provides a competitive mix of premium features at a mid-range price-point. Built on the ultra-reliable 95 suspension, the Corsair aligns well with the needs of fleet customers, but it also has a triple chamber lumbar and can be configured with the optional Backcycler and Ultraleather upholstery.

Part No.	Model	Description	Price
51100.645A	Corsair	Dual Wide Armrests, Black Ultraleather	<b>\$934.99</b>
51100.666C	Corsair	Dual Wide Armrests, Black Mordura Cloth, Bellows Suspension Cover	<b>\$854.99</b>



# Nitrogen Oxide Sensors



## BETTER TESTING YIELDS BETTER SENSORS

Sensors are rigorously benchmarked against original equipment standards using advanced in-house test equipment.

These tests ensure that our sensors communicate NOx levels with the same speed and accuracy as the original equipment for seamless replacement. The tests also evaluate heater response time to make sure our sensors are up to temperature and ready to communicate NOx data to the ECM.

When you choose a replacement sensor from Dayton Parts, you're installing a heavy-duty solution backed by real-world data you can trust for the long haul.

- **Extensively tested** – In-house analysis ensures performance of Dayton NOx sensors in real-world use
- **Precision calibration** – Engineered and calibrated with proprietary software to help ensure proper function of complex emissions control systems
- **Fast heater response** – Dayton NOx sensors rapidly reach operating temperature to communicate NOx data to ECM
- **Seamless installation** – Designed to match the fit and function of the OE for hassle-free repairs

Part No.	Description	OE Cross Reference	Price
904-6001	Nitrogen Oxide Exhaust Sensor	Cummins - 2872949 / 2872949NX / 2897314 / 2897314NX / 4326475 / 4326475NX / 4326867 / 4326867RX	<b>\$315.99</b>
904-6006	Nitrogen Oxide Sensor Outlet of Diesel Particulate Filter	Cummins - 2872947 / 2872947NX / 4326869 / 4326869RX Paccar - 1954666 / 954666PE / 1954666PRX	<b>\$315.99</b>
904-6011	Nitrogen Oxide Sensor Inlet of Diesel Particulate Filter	Cummins - 2872779 / 2872779NX / 2872948 / 2872948NX / 2897311 / 326873RX / 4326476 / 4326476NX / 4326873 / 4326873RX / 5295473 / 5295473RX Caterpillar - 5499316	<b>\$315.99</b>
904-6017	Nitrogen Oxide Sensor Inlet of Diesel Particulate Filter	Cummins - 2871978 / 2894939 / 2894939RX / 4984053 / 4984576	<b>\$349.99</b>
904-6003	Nitrogen Oxide Sensor Inlet of Diesel Particulate Filter	Cummins - 2872297 / 2894945 / 2894945NX / 5293295 / 5293295NX / 5293295RX	<b>\$315.99</b>



**Point Spring & Driveshaft Co.**

Since 1926

Promotional pricing valid through 6/30/24



# Exhaust Replacement Parts



## MUFFLERS

Part No.	Description	Price
M-465	10" x 44.5",5" ID/D - Round - Centered	<b>\$112.99</b>
M-087	11" x 36",4" ID/D - Round - Centered	<b>\$254.99</b>
M-536	8.25" x 11.5" x 32" 3.5" - 4" ID/D - Oval - Offset	<b>\$192.99</b>
M-514	9" x 44.5",4"-5" ID/D - Round - Centered	<b>\$186.99</b>
M-145	9" x 10",5" ID/D - Round - Centered	<b>\$124.99</b>
M-595	9" x 20",5" ID/D - Round - Centered	<b>\$152.99</b>

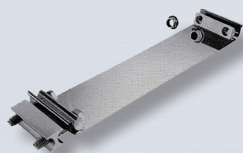
## CLAMPS

### Preformed



Part No.	Diameter	Price
GRE-PF3SS	3"	<b>\$12.99</b>
GRE-PF35SS	3.5"	<b>\$14.99</b>
GRE-PF4SS	4"	<b>\$13.99</b>
GRE-PF5SS	5"	<b>\$14.99</b>

### Band



Part No.	Diameter	Price
EZ-3SS	3"	<b>\$12.99</b>
EZ-35SS	3.5"	<b>\$13.99</b>
EZ-4SS	4"	<b>\$10.99</b>
EZ-5SS	5"	<b>\$14.99</b>

### Saddle



Part No.	Diameter	Price
HD-3ZN	3"	<b>\$7.99</b>
HD-35ZN	3.5"	<b>\$8.99</b>
HD-4ZN	4"	<b>\$8.99</b>
HD-5ZN	5"	<b>\$8.99</b>

## FLEX PIPE

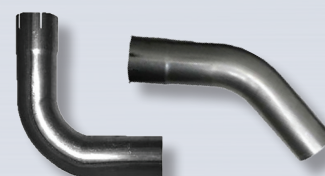


Part No.	Diameter	Price
S49-4300	FLEX, 4" (Price per Foot)	<b>\$18.99</b>
S49-5300	FLEX, 5" (Price per Foot)	<b>\$18.99</b>



## STRAIGHT PIPES

Part No.	Description	Price
S3-120SBA	Tube, 3" (Price per Foot)	<b>\$7.99</b>
S35-120SBA	Tube, 3.5" (Price per Foot)	<b>\$9.99</b>
S4-120SBA	Tube, 4" (Price per Foot)	<b>\$11.99</b>
S5-120SBA	Tube, 5" (Price per Foot)	<b>\$14.99</b>



## ELBOWS

Part No.	Description	Price
L490-1212A	4" 90DEG 12 x 12 ID/OD	<b>\$44.99</b>
L490-0808A	4" 90DEG 08 x 08 ID/OD	<b>\$44.99</b>
L590-1010A	5" 90DEG 10 x 10 ID/OD	<b>\$50.99</b>
L590-1212A	5" 90DEG, 12 x 12 ID/OD	<b>\$39.99</b>
L590-1515A	5" 90DEG, 15 x 15 ID/OD	<b>\$50.99</b>
L590-1818A	5" 90DEG, 18 x 18 ID/OD	<b>\$46.99</b>
L545-0808A	5" 45DEG 08 x 08 ID/OD	<b>\$47.99</b>



**Point Spring & Driveshaft Co.**

Since 1926

Promotional pricing valid through 6/30/24





# Multi-Purpose Maintenance Spray



The Truck-Lite Multi-Purpose Maintenance Spray is the perfect solution for all your maintenance needs. This multi-purpose spray can quickly release seized frozen parts, prevents and removes corrosion build-up and provides high dielectric insulation against electrolysis. It also forms a protective thin film barrier to stop oxidation and prevent rust from spreading

- Quickly loosens frozen or seized parts
- Invades hard-to-reach crevices and creeps through the tightest seams
- Displaces moisture
- Corrosion Control: Forms a protective thin film barrier to stop oxidation and prevent rust from spreading
- Dissolves corrosion oxide
- Maintains lubricity under high loads for superior reduction of friction, heat and noise
- Use on fifth wheel springs and rails, glad hands, control linkages, roll-up doors, hinges and latches, chains and pulleys and more
- Outperforms other penetrants
- Prevents and removes corrosion build-up
- High dielectric insulation against electrolysis
- Extreme pressure lubricant
- For use on connectors including ABS, 4-13 way plugs and sockets, battery terminals and more

Part No.	Description	Price
97946	14oz. Spray Can	<b>\$19.99</b>

## POINT SPRING & DRIVESHAFT CO. LOCATIONS

**NEVILLE ISLAND, PA**  
7309 Grand Avenue  
Neville Island, PA 15225  
Ph: 412-264-6714  
Fx: 412-264-6722  
(800) 837-4713

**NEW CASTLE, PA**  
1001 Harbor Street  
New Castle, PA 16101  
Ph: 724-658-9076  
Fx: 724-658-8746  
(800) 837-8713

**TROY, PA**  
68 Canton Street  
Troy, PA 16947  
Ph: 570-297-5555  
Fx: 570-297-5510  
(855) 297-6380

**SARVER, PA**  
555 North Pike Road  
Sarver, PA 16055  
Ph: 724-352-3340  
Fx: 724-352-5311

**INDIANA, PA**  
1849 South Sixth  
Street Suite 5  
Indiana, PA 15701  
Ph: 724-463-3710

**GREENSBURG, PA**  
1967 Route 66  
Greensburg, PA 15601  
Ph: 724-834-0750  
Fx: 724-834-8747  
(800) 837-9713

**MEADVILLE, PA**  
11377 Mercer Pike  
Meadville, PA 16335  
Ph: 814-724-7746  
Fx: 814-724-7747  
(800) 724-7751

**CLEARFIELD, PA**  
1729 Industrial Park Rd.  
P.O. Box 1206  
Clearfield, PA 16830  
Ph: 814-765-9684  
Fx: 814-765-1577  
(800) 252-3585

**FAIRMONT, WV**  
274 Van Kirk Drive  
Fairmont, WV 26554  
Ph: 304-534-3306  
Fx: 304-534-5079  
(800) 837-1713

**AKRON, OH**  
1250 Triplett Blvd.  
Akron, OH 44306  
Ph: 330-724-1111  
Fx: 330-724-1895  
(800) 826-0673



**Point Spring & Driveshaft Co.**  
Since 1926

follow us on social media



Point Spring & Driveshaft Co.

@Pointspring1926