



Point Spring & Driveshaft Co.

Since 1926

PARTS • SERVICE • EXPERIENCE • SOLUTIONS

Grote®

BRITEZONE™ WORK LAMPS



BZ421-5



BZ131-5



BZ141-5



BZ211-5



BZ221-5



BZ321-5



BZ221-5



BZ121-5

Part Number	Description	Pattern	Power Consumption	Raw Lumens	Volts	PRICE
BZ121-5	ROUND WORK LAMP WITH SWITCH	FLOOD	24 WATTS	1920	10 – 32 VOLTS	\$53.99
BZ131-5	5 SWIVEL HEAD LAMP WITH SWITCH	FLOOD	27 WATTS	4000	10 – 30 VOLTS	\$75.99
BZ141-5	SMALL ROUND WORK LAMP	FLOOD	18 WATTS	1750	10 – 30 VOLTS	\$22.99
BZ211-5	SMALL SQUARE WORK LAMP	FLOOD	12 WATTS	1100	10 – 30 VOLTS	\$22.99
BZ221-5	PEDESTAL MOUNT SPOT LED	SPOT	40.5 WATTS	4800	10 – 30 VOLTS	\$53.99
BZ321-5	RECESS MOUNT LED WORK LAMP	FLOOD	25.7 WATTS	2400	10 – 30 VOLTS	\$55.99
BZ331-5	SMALL RECTANGULAR WORK LAMP	FLOOD	9 WATTS	800	10 – 30 VOLTS	\$22.99
BZ421-5	BATTERY-POWERED LED WORK LAMP	FLOOD	12 WATTS	2160	12 VOLTS DC	\$72.99

Rain or shine...day or night...Grote's affordable new LED lamps are designed to work when you need them. No excuses.

- The rugged, durable construction and LED power of BriteZone lamps far outshine halogen to get the job done without breaking the bank.
- Boating. Mowing. Off-roading. For working or playing until long after the sun goes down, you need a lamp that's as tough and tireless as you are.
- Grote's BriteZone family has an LED lamp for any application—even tow trucks, garbage trucks, and forklifts.
- Value-priced to meet your budget.



Due to market conditions relating to COVID-19, all prices are subject to change without notice.

www.pointspring.com

Promotional pricing valid through 12/31/2023

Tectran Air Dryers

Part Number	Description	PRICE
AT065225	AD-9 (NEW w/o Bracket)	\$197.99
AT955205K	WABCO-Style 1200 Kit with PCCV & Heater Wire (NEW)	\$212.99
AT065612	AD-IP Air Dryer 12V w/ Harness & Bracket (NEW)	\$223.99
AT801266	AD-IS 12V (New w/o Bracket)	\$274.99
AT065226K	OCP Model 9 Air Dryer 12V Coalescing Plus w/ Bracket	\$201.99



Tectran Air Dryer Cartridges

Part Number	Description	PRICE
AT107796	AD-9 (NEW)	\$31.99
AT109994	AD-SP (NEW)	\$23.99
AT065624	AD-IP (NEW)	\$106.99
AT950011	Wabco-Style 1200 (NEW)	\$23.99
AT224	CR/SKF-Style T2000 (NEW)	\$51.99



Tectran Air Dryer Accessories

Part Number	Description	PRICE
AT800405	AD-9 Purge Valve Assembly	\$60.99
AT022105	AD-IP/IS Purge Valve Assembly	\$62.99
TV275491	D2 Governor (NEW)	\$13.99
TV284412	DV2 Drain Valve w/ Heater	\$64.99



WABCO

Wabco Air Treatment

Part Number	Description	PRICE
4006110500	WABCO 1200 Air Dryer (NEW)	\$466.99
4329012482	Wabco 1200 Oil Coalescing Cartridge (NEW)	\$82.99
4324139342	WABCO Turbo Valve Kit	\$44.99
4324139292	WABCO Purge Valve Kit	\$80.99



Due to market conditions relating to COVID-19, all prices are subject to change without notice.



Winter Additives



Part Number	Description	Price/Case
5632	Penray Air Brake Anti-Freeze - 32 oz (12/case)	\$48.99
5601	Penray Air Brake Anti-Freeze - 1 Gallon (4/case)	\$53.99
2021-32	Penray Winter Thaw Emergency Diesel Fuel Treatment - 32 oz (12/case)	\$84.49
2020-12	Penray Diesel Fuel Treatment W/ Anti-Gel - 12 oz (12/case)	\$47.99
D20-16	E-Zoil Artic Flow - 16 oz (24/case)	\$209.99
D15-16	E-Zoil Artic Power - 16 oz (24/case)	\$198.99
F10-16	E-Zoil D-Gel Emergency Additive - 16 oz (24/case)	\$177.99

Part Number	Description	Price/Case
D10-08	E-Zoil Diesel Aid Performance Additive - 8 oz (24/case)	\$149.99
A30-32	E-Zoil Air Brake Anti-Freeze - 32 oz (12/case)	\$57.99
A30-01	E-Zoil Air Brake Anti-Freeze - 1 Gallon (4/case)	\$75.99
D70-16	E-Zoil Carbon Crusher - 16 oz (24/case)	\$204.99
KRW71400	Krown KL73 Corrosion Inhibitor - 14 oz aerosol (12/case)	\$158.99
KRW1198	Krown Salt Eliminator - 14 oz aerosol (12/case)	\$165.99

Wiper Blades

Part Number	Description	PRICE
37-160 / 37-180	Trico Chill 16" or 18" Winter Blade	\$11.99
37-205 / 37-225	Trico Chill 20" or 22" Winter Blade	\$11.99
31-16 / 31-18 / 31-20 / 31-22	Anco 16", 18", 20" or 22" Summer Blade	\$3.99
97-18 / 97-20 / 97-22	Anco 18", 20" or 22" AeroVantage Blade	\$4.99
80201	ClearPlus® Winter 20" Black Wiper	\$6.99
80221	ClearPlus® Winter 22" Black Wiper	\$6.99



37-160



97-20



31-16



Due to market conditions relating to COVID-19, all prices are subject to change without notice.



Point Spring & Driveshaft Co.

Since 1926



Tire Chains - Standard Highway Singles

Part Number	Description	PRICE
2214	225/70-17.5; 225/70-19.5	\$94.99
2228	LT265/75R-16; LT285/75R-16; LT265/70R-17; 245/70R-19.5	\$109.99
2255	315/75-24.5; 315/80-22.5	\$177.99
2245QC	10.00-20; 10R-22; 11-22.5; 11R-22.5; 275/80R-22.5	\$117.99
2247QC	285/75-22.5	\$117.99
2249QC	10-22; 10R-22; 11-24.5; 11R-24.5	\$117.99



Standard Highway Singles



Dual Triples

Tire Chains - Standard Highway Dual Triples

Part Number	Description	PRICE
4245QC	10.00-20; 10R-20; 275/80R-22.5	\$205.99
4249QC	11-24.5; 11R-24.5	\$205.99



V-Bar Reinforced Singles



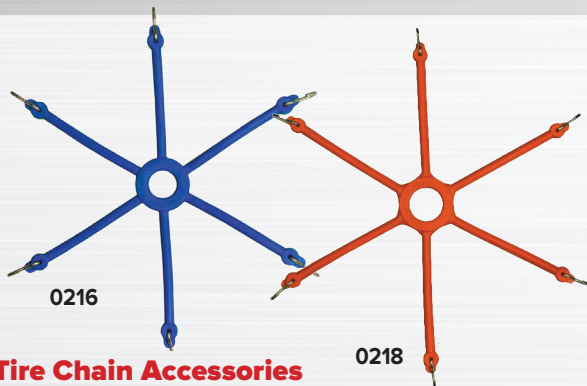
Mud Chain

Tire Chains - RS V-Bar Reinforced Singles

Part Number	Description	PRICE
2821	LT235/85R-16; LT235/85-16; LT245/75R-16	\$127.99
2828	LT265/75-16; LT265/70R-17; LT285/75-16; LT245/70R-19.5	\$134.99
2845	10.00-20; 10R-22; 11-22.5; 11R-22.5; 275/80R-22.5	\$184.99

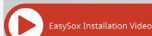
Square Link Mud Chains

Part Number	Description	PRICE
2150HDQC	10.00-22; 11-24.5; 285/75-24.5; 285/80-24.5	\$391.99



Tire Chain Accessories

Part Number	Description	PRICE
0216	Light Truck Spider Bungee	\$12.99
0218	Heavy Truck Spider Bungee	\$28.99



EasySox is a slip-on fabric tire sock that provides traction on snow and ice in emergency situations

- Lightweight and less bulky, making them easier to handle and store
- Lower risk of vehicle damage
- Simple slip-on installation



Part Number	Description	PRICE
ES225	10.00-20; 11-22.5; 285/80-22.5; 295/80-22.5; 285/75-24.5; 295/75-24.5; 275/80-24.5	\$179.99
ES245	11.00-20; 12.00-20; 12-22.5; 11-24.5; 315/80-22.5; 11.00-22	\$179.99

Due to market conditions relating to COVID-19, all prices are subject to change without notice.





Bendix Air Dryers

Part Number	Description	PRICE
065225	Bendix AD-9 (NEW)	\$429.99
109685X	Bendix AD-9 (Reman Exchange)	\$202.99
109685PGX	Bendix AD-9 w/ Puraguard Desiccant (Reman Exchange)	\$225.99
800887	Bendix AD-SP (NEW)	\$624.99
801266	Bendix AD-IS (NEW)	\$580.99
5010696X	Bendix AD-IS (Reman Exchange)	\$385.99
K026596	Bendix AD-IP (NEW)	\$677.99
109477X	Bendix AD-IP (Reman Exchange)	\$318.99
109477PGX	Bendix AD-IP w/ Puraguard Desiccant (Reman Exchange)	\$349.99



065225



800887



801266



K026596

Bendix Air Dryer Cartridges

Part Number	Description	PRICE
107794X	Bendix AD-9 (Reman Exchange)	\$31.99
107794PGX	Bendix AD-SP/AD-IS (NEW)	\$58.99
5008414	Bendix AD-IP (Reman Exchange)	\$69.99
5008414PG	Bendix AD-IP Puraguard (Reman Exchange)	\$123.99
109493X	Bendix AD-IP Puraguard (NEW)	\$91.99
109493PGX	Bendix AD9 Puraguard (Reman Exchange)	\$128.99
065624PG	Bendix AD-IS Puraguard (NEW)	\$325.99



107794X



5008414



109493X

Bendix Air Dryer Accessories

Part Number	Description	PRICE
K022105	Bendix AD-IP/AD-IS Purge Valve Assembly Kit (NEW)	\$124.99
5004341X	Bendix AD-9 Soft Seat Purge Valve Kit (Reman Exchange)	\$73.99
109995	Bendix AD-SP Purge Valve Kit (NEW)	\$106.99
OR275491X	Bendix D2 Governor (Outright Exchange)	\$21.99
5004049	Bendix AD-IS Air Governor/Check Valve Kit (NEW)	\$99.99
109871N	Bendix AD-9 Wiring Harness (No longer Incl. w/ Dryer)	\$31.99
OR284412X	Bendix DV2 Drain Valve w/ Heater	\$129.99



k022105



5004341X



OR275491X



OR284412X

Due to market conditions relating to COVID-19, all prices are subject to change without notice.



Point Spring & Driveshaft Co.
Since 1926



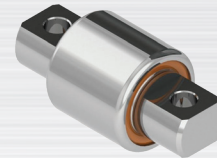
WHAT MAKES GAFF® POLYURETHANE DIFFERENT?

In a single word it is more **RESILIENT**. It is substantially less affected by UV or chemical agents on the road which means the material doesn't age compared to rubber components. High performance polyurethane is designed for the application to extend the uptime of the vehicle, in the harshest road conditions.

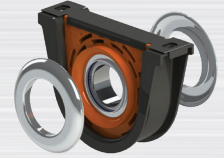
Part Number	Description	Cross Reference	PRICE
GAFF11083	Freightliner Spring Pin Bushing	RB-268; MR783	\$58.99
GAFF13520	Straddle Mount Torque Rod Bushing	321-132; TS38000; TRB6825E	\$47.99
GAFF40074	Carrier Bearing	10094142	\$77.99
GAFF12014	Lower Insulator Pad	325-110	\$77.99
GAFF12006	Upper Insulator Pad	325-112	\$58.99
GAFF12039	Insulator Pad Kit		\$594.99
GAFF12369	Peterbilt Motor Mount	M20310	\$24.99
GAFF13691	Torque Rod Assembly - Male End	345-661	\$88.99
GAFF13683	Torque Rod Assembly - Female End	345-610	\$91.99
GAFF13626	Bolster Spring Kit - HN	334-2036	\$217.99
GAFF13807	Auxiliary Load Pad - HN	334-1894	\$87.99
GAFF13601	Bolster Spring Kit - Haulmaxx	334-852A	\$211.99
GAFF11773	Torque Rod Assembly	345-955	\$176.99
GAFF11611	Eaton Shifter Bushing Kit		\$22.99
GAFF18455	Polyurethane Wheel Chock		\$14.99



GAFF11083



GAFF13520



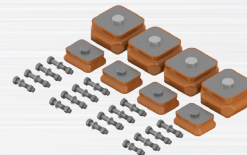
GAFF40074



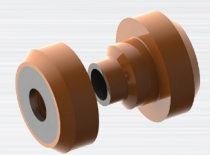
GAFF12014



GAFF12006



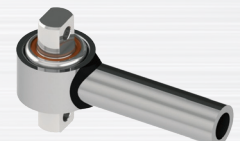
GAFF12039



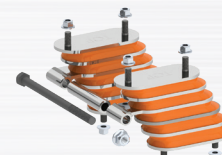
GAFF12369



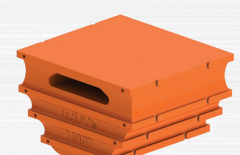
GAFF13691



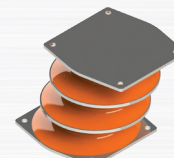
GAFF13683



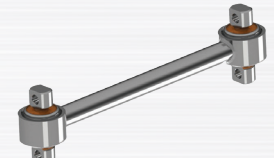
GAFF13626



GAFF13807



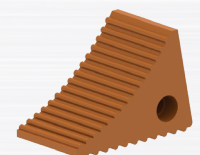
GAFF13601



GAFF11773



GAFF11611



GAFF18455

Due to market conditions relating to COVID-19, all prices are subject to change without notice.

LED HEADLIGHTS



Freightliner Columbia 2017-01

Part Number	Description	Price
888-5201LED	Right Side	\$425.99
888-5202LED	Left Side	\$425.99



Freightliner Cascadia 2018-08

Part Number	Description	Price
888-5225	Right Side	\$554.99
888-5226	Left Side	\$554.99



Freightliner 2021-02, Thomas 2019-04

Part Number	Description	Price
888-5203LED	Right Side	\$458.99
888-5204LED	Left Side	\$458.99



International ProStar 2020-07

Part Number	Description	Price
888-5229	Left Side	\$529.99
888-5230	Right Side	\$529.99



Volvo VNL 2018-12

Part Number	Description	Price
888-5227	Left Side	\$699.99
888-5228	Right Side	\$729.99



Mack MR 2007-81, Mack MRU 2019-08

Part Number	Description	Price
888-5000	7" Round Headlight	\$172.99



Dorman HD Solutions lighting products feature the following benefits:

- All Dorman Headlights are coated with a two-component, thermally cured silicone hard coating, which is recommended by TMC*
- Coating helps prevent headlight's surface from hazing



Due to market conditions relating to COVID-19, all prices are subject to change without notice.



Voyager®



REVOLUTIONARY HUB- INSTALLED, UNITIZED SEAL

The Voyager® wheel seal is designed for regional route trucks, city traffic and coach applications. Rugged design, simple installation and proven performance make Voyager the right choice for fleets seeking a superior seal for everyday stop-and-go traffic environments.

VOYAGER CROSS-REFERENCE GUIDE

Simpler, Quicker Installations

A bonded rubber OD and piloted entry ensures an easy and square installation.

Superior Seal

A ribbed rubber OD forms a superior seal between the seal case and the hub bore without needing additional sealant.

Reduce Contamination

A four-zone labyrinth system excludes waterborne and airborne contaminants.

Avoid Installation Damage

Thick-wall steel construction allows positive hub installation without seal warping or bending.

Increase Reliability

The temperature-resistant polymer with hydrodynamic pumping keeps the lubricant in place.

Easy Removal

Bonded rubber ID and OD allow for easier removal while anti-rotation features lock the ID surface in place.

APPLICATION	VOYAGER P/N	TYPE	INNER BEARING	HUB TOOL P/N	BEARING GUIDE
19,000# Tractor Axle: Standard Forge, Dana, Meritor, Eaton	373-0113	L2	663	551-5313	570-0023
Pro-Par Tractor Axle: Fruehauf, Eaton P-22, Meritor TP, Dana	373-0123	L1	HMS18445	551-5401	570-0025
22,500# Tractor Axle: Meritor, Standard Forge, Dana, Eaton	373-0143	L1	HM218248	551-5412	570-0026
20,000# Tractor Axle: Meritor, Shuler	373-0144	L3	665A	551-5339	570-0024
25,000# Tractor Axle	373-0191	L2	749/643	551-5401	570-0003
Meritor Front Transit	383-0101	L2	6386 or 6389 6379	551-5420	570-0020 N/A
12,000# Front Axle: Meritor, Eaton, Ford, Freightliner, Kenworth, Western Star, Navistar, Peterbilt, Volvo GM	383-0136	L1	39581 HM212044 HM212049-X HM212047	551-5346 551-5346 551-5346 551-5346	570-0017 570-0018 570-0020 570-0019
12,000# Mack Front Axle	*383-0139	L2	641 or HM212049	551-5413	570-0020
Navistar Front Axle, FA309, FA329	383-0153	L3	641 or HM212049 H715345	551-5419 551-5419	570-0020 570-0021
9,000# Front Axle: Navistar, FA 109 Cast Wheel 79 and Up	383-0156	L2	641 H715345	551-5344 551-5344	570-0020 571-0021
16,000# Front Axle: Ford, Navistar, Mack, Meritor, White, Kenworth, Western Star, Peterbilt, Volvo GM	383-0164	L2	6461A	551-5327	570-0022
6,000#, 7,500#, Front Axle: Navistar	383-0166	L3	JM207049 or JM205149	551-5423	570-0036 570-0033
GMC F-120 1985 and up	383-0171	L2	HM212047	551-5403	570-0019
8,000# Front Axle: GMC Topkick	383-0175	L2	JM205149	551-5417	570-0033
11,000# Front Axle: GMC Topkick	383-0176	L2	33212	551-5418	570-0031
34,000#, 38,000# Drive Axle: Mack	393-0103	L2	580 or 582	551-5415	570-0023
44,000# Drive Axle: Mack	393-0104	L2	663 or HMS16449-A	551-5414	570-0023
34,000# Drive Axle: Eaton, Ford, Navistar, White	393-0112	L2	47685 or 47686 47678 or 5760	551-5416 551-5416	570-0023 570-0022
17,000# Single and 34,000# Tandem: GMC	393-0115	L3	47686	551-5424	570-0023
Meritor Drive Transit	393-0134	L2	6580 or 6559	551-5421 551-5421	570-0025 570-0023
50,000#, 60,000# Drive Axle: Mack	393-0148	L2	687 or 780	551-5400	570-0032
38,000#, 46,000# Tandem Axles: Eaton, Ford, Freightliner, Kenworth, Western Star, Peterbilt, Meritor, Navistar, Volvo GM	393-0173	L1	594 or 594A 598 or 598A	551-5320 551-5320	570-0028 570-0027

* Also sold as 383-8139 Kit, which includes the 310-1132 shoulder bushing.

Due to market conditions relating to COVID-19, all prices are subject to change without notice.



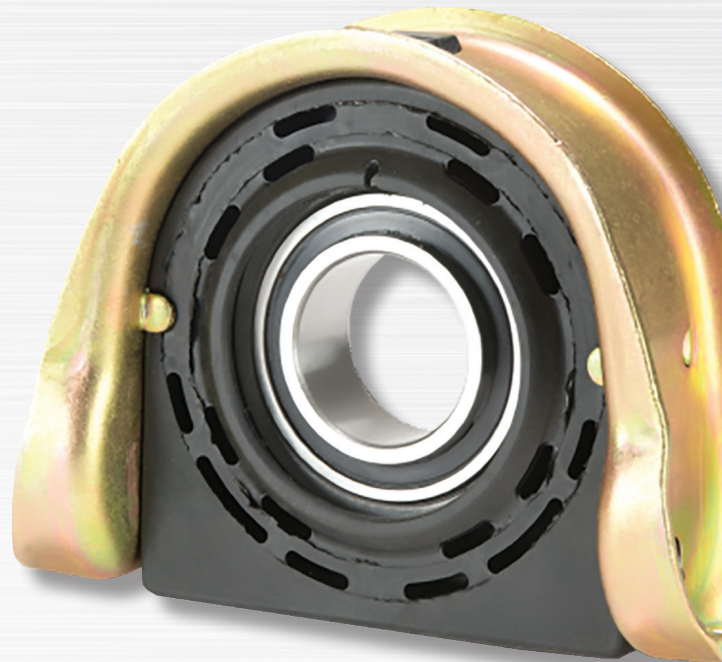
Extended Life Premium Self-Aligning Center Bearing

Neapco's history and dedication to Manufacturing Driveline Solutions since 1921, and our quality products that are proven to outperform the competition makes us the industry's most experienced and qualified driveline experts. Our Self-Aligning Center Bearings continue this longstanding level of quality.



Neapco Self-Aligning Center Bearing Features and Benefits

DESCRIPTION	FEATURES	BENEFITS
Improved Design	Enhanced Alignment Capability	Allows +/- 10 degrees of driveline angularity
Mounting bracket	Provides a common mounting platform on the cross member or mounting bracket	No bracket changes or shimming are required to attain the desired driveline alignment
Premium Bearing	Premium Seal, Higher Load Capacity	Extended Life
Part number compatibility	Easy to cross-reference	Provides backward compatibility with previous Neapco part numbers and/or current competitor designs
Self-aligning center bearing	Direct replacement	For all vehicles equipped with OEM self-aligning center support bearing
Enhanced rubber cushion	Incorporates a drain galley. Increased attaching points	Extended Life



DIMENSIONAL SPECIFICATIONS

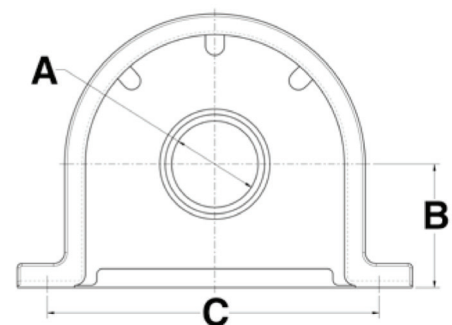
A	A	B	C		Part
Bore	Bore	CL Of Bearing	CL to CL of	Bolt Hole	Number
Inches	MM	to Face	Mounting	Diameter	
2.362	60	3.37	8.62	8.62	N210661-1XSA

DRIVELINE SERIES GENERAL APPLICATIONS

Part Number	Driveline Series
N210661-1XSA	SPL170*, SPL250*, 1710HD, 1760, 1810, 8.5C, 9C

CROSS REFERENCE INTERCHANGE

Neapco Part Number	Meritor Part Number	Spicer Part Number
N210661-1XSA	CB210661-1XSA	5003323, 210987-1X, 212066-1X, 212129-1X



Due to market conditions relating to COVID-19, all prices are subject to change without notice.



Point Spring & Driveshaft Co.
Since 1926



Chelsea® 810 Series Power Take-Off

Newly designed for NEW Ford 10R140HD transmissions

Parker Chelsea is delighted to announce the new 810 Series PTO specifically designed for the new Ford 10R140HD transmissions. These transmissions will be on all MY2024 F-650 and F-750 medium-duty trucks with diesel applications.

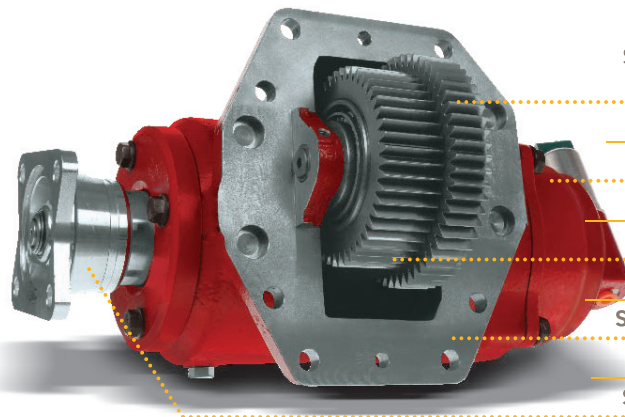
Equipped with Parker Chelsea's QT Gear Technology, the 810 Series produces minimal noise. QT Gear Technology smooths out torsional vibrations found in diesel engine applications to reduce noise.

The 810 Series also features Smart Start Technology which allows the PTO to come up to speed in a safe and efficient manner. Without sacrificing horsepower, Smart Start minimizes torque spike at engagement.

In addition to Quiet Gear and Smart Start solutions, the 810 Series features a variety of ratio and output options including common pump mount and drive line output options. Parker Chelsea is committed to meeting the needs of customers.



The 810 Series features various ratio and output options, including common pump mount and drive line options.



STRONGER GEAR SETS AND
LARGER BEARINGS

MULTIPLE RATIO OPTIONS

QT GEAR TECHNOLOGY

SMART START TECHNOLOGY

SEVERAL OUTPUT OPTIONS

Due to market conditions relating to COVID-19, all prices are subject to change without notice.



#JP-12-10000T

Easily jump start a dead semi-truck, charge phones, digital cameras, tablets, laptops, and portable gaming devices with multiple power ports!

The Jump-Pack is equipped with proprietary technology, which provides an instantaneous energy transfer to the battery the moment the cables are properly connected, which maximizes jump-starter performance.

INCLUDES: Jump starter with jumper cables plus 18V 100-240 VAC wall charger, safety strap, 3-in-1 mobile adapter, and carrying case.

START-ALL®
JUMP-PACK
10,000A • 133200 joules^{SS} • 12V

**Instantly Jump Start
Your Class 8
Commercial Vehicles**

Engine	Instantly jump starts engines up to 16 liter diesel
Part Number	JP-12-10000
Dimensions	10.93" (L) x 10.78" (H) x 4.33" (W)
Unit Weight	11 lbs. With case: 17 lbs.
Battery Type	High output premium lithium-Ion
Capacity	236.8 Watt-hours (263,800 mWh)
Joules ^{SS}	133200
Amps	10,000 Amps (<200 ms)
Volts	12
Lifetime Performance	Up to 5000 starts
Operating Temperature	-4° F to +140° F; -20° C to +60° C
Built-In Protect-All™ Safety Protection	Reverse polarity, low voltage protection, short circuit, overheat protection, over discharge protection
Warranty	One year

Due to market conditions relating to COVID-19, all prices are subject to change without notice.



Point Spring & Driveshaft Co.
Since 1926



**Point Spring &
Driveshaft Co.**
Since 1926

1ST ANNUAL
Bill Ryan Toy Drive
Benefiting the
BEST OF THE BATCH FOUNDATION



This holiday season, Point Spring & Driveshaft Co. is partnering with the Best of the Batch Foundation to provide local families in need with presents and household necessities. We will be collecting toys as well as monetary donations at all 10 Point Spring locations until December 1st. In addition to acting as collection sites, Point Spring & Driveshaft Co. has committed to match all monetary donations up to \$5,000. This will help to spread holiday cheer across all of our communities.



For every toy or monetary donation made to the best of the batch foundation, you will be given a ticket for entry into a drawing for a signed football helmet or the grand prize of 4 tickets and a parking pass to the Pittsburgh football game on December 23rd against Cincinnati.

For more information on the Best of the Batch foundation, visit their website at www.batchfoundation.org

POINT SPRING & DRIVESHAFT CO. LOCATIONS

NEVILLE ISLAND, PA
7309 Grand Avenue
Neville Island, PA 15225
Ph: 412-264-6714
Fx: 412-264-6722
(800) 837-4713

NEW CASTLE, PA
1001 Harbor Street
New Castle, PA 16101
Ph: 724-658-9076
Fx: 724-658-8746
(800) 837-8713

TROY, PA
68 Canton Street
Troy, PA 16947
Ph: 570-297-5555
Fx: 570-297-5510
(855) 297-6380

SARVER, PA
555 North Pike Road
Sarver, PA 16055
Ph: 724-352-3340
Fx: 724-352-5311

INDIANA, PA
1849 South Sixth
Street Suite 5
Indiana, PA 15701
Ph: 724-463-3710

GREENSBURG, PA
1967 Route 66
Greensburg, PA 15601
Ph: 724-834-0750
Fx: 724-834-8747
(800) 837-9713

MEADVILLE, PA
11377 Mercer Pike
Meadville, PA 16335
Ph: 814-724-7746
Fx: 814-724-7747
(800) 724-7751

CLEARFIELD, PA
1729 Industrial Park Rd.
P.O. Box 1206
Clearfield, PA 16830
Ph: 814-765-9684
Fx: 814-765-1577
(800) 252-3585

FAIRMONT, WV
274 Van Kirk Drive
Fairmont, WV 26554
Ph: 304-534-3306
Fx: 304-534-5079
(800) 837-1713

AKRON, OH
1250 Triplett Blvd.
Akron, OH 44306
Ph: 330-724-1111
Fx: 330-724-1895
(800) 826-0673



**Point Spring &
Driveshaft Co.**
Since 1926

follow us on social media



Point Spring &
Driveshaft Co.



@Pointspring1926