

## Identifying Wheel End Problems

Regular inspection and maintenance can reduce bearing damage in conventional wheel ends and decrease long-term costs.

### Visual Wheel Inspection

#### Bearing damage indicators:

- Hubcap sight glass discolored or burnt
- Low lube level in hubcap sight glass
- Lube leakage on wheel hub or tire, inboard and outboard sides
- Abnormal tire wear
- Smoking or extremely hot hubcap



### Driver Observations

#### Bearing damage indicators:

- Wheel vibration
- Wheel wobble
- Wheel noise
- Smoke from a wheel end
- Decreased braking power
- Increased fuel consumption
- Abnormal side pull when braking
- Wheel lock-up/skidding





Visit [timken.com/techseries](http://timken.com/techseries) to enroll in free technical training.

Get more TechTips online at [www.timken.com/techtips](http://www.timken.com/techtips)

## Wheel End Disassembly Analysis

### Bearings *may* need replaced:

- Worn nut face (adjusting nut and lug nuts)
- Bearing noisy when rotated
- Rust or moisture
- Spindle wear (more wear on bottom half)
- Thread wear
- Hub shoulder wear
- Hub bore wear
- Loss of adjusting nut or jam nut torque
- Bearing dropped
- Worn out or damaged seals

### Bearings *must* be replaced:

- Dry, caked lube in hubcaps or other internal cavity
- Metal particles in lube, hubcaps, hubs, or bearings
- Heat discoloration on bearings or any other internal component (heat discoloration is a nonremovable stain)
- Grooves on bearing cone (inner race) backface, bore or spindle
- Wear on any bearing surface
- Dents on bearing assembly cage
- Spalling (flaking away) of bearing material on races or roller bodies (Fig. 1 and 2)
- Any raised metal or dents on races or rollers

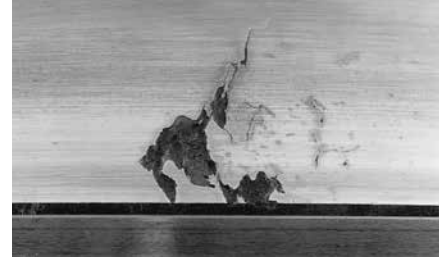


Fig. 1: Point Surface Origin (PSO) spalling



Fig. 2: Geometric Stress Concentration (GSC) spalling

#### **WARNING**

**Failure to observe the following warnings could create a risk of death or serious injury.**

Never spin a bearing with compressed air. The components may be forcefully expelled. Proper maintenance and handling practices are critical. Always follow installation instructions and maintain proper lubrication.

A bearing/component should not be put into service if its shelf life has been exceeded.

#### **CAUTION**

**Failure to follow these cautions may result in property damage**

Use of improper bearing fits may cause damage to equipment.

Do not use damaged bearings.

*TechTips is not intended to substitute for the specific recommendations of your equipment suppliers. Every reasonable effort has been made to ensure the accuracy of the information contained in this writing, but no liability is accepted for errors, omissions or for any other reason.*

# TIMKEN

The Timken team applies their know-how to improve the reliability and performance of machinery in diverse markets worldwide. The company designs, makes and markets high-performance mechanical components, including bearings, gears, belts, chain and related mechanical power transmission products and services.

[www.timken.com/aftermarket](http://www.timken.com/aftermarket)

Stronger. **Commitment.** Stronger. **Value.** Stronger. **Worldwide.** Stronger. **Together.** | Stronger. **By Design.**